

Datasheet for ABIN1319863

SH2D1B Protein (AA 1-132) (GST tag)[Go to Product page](#)**1** Image

Overview

Quantity:	10 µg
Target:	SH2D1B
Protein Characteristics:	AA 1-132
Origin:	Human
Source:	Wheat germ
Protein Type:	Recombinant
Purification tag / Conjugate:	This SH2D1B protein is labelled with GST tag.
Application:	ELISA, Western Blotting (WB), Affinity Purification (AP), Antibody Array (AA)

Product Details

Purpose:	SH2D1B (Human) Recombinant Protein (P01)
Sequence:	MDLPYYHGRL TKQDCETLLL KEGVDGNFLL RDSSESIPGVL CLCVSFKNIV YTYRIFREKH GYYRIQTAEG SPKQVFPSLK ELISKFEKPN QGMVVHLLKP IKRTSPSLRW RGLKLELETF VNSNSDYVDV LP
Characteristics:	Human SH2D1B full-length ORF (NP_444512.2, 1 a.a. - 132 a.a.) recombinant protein with GST-tag at N-terminal.
Purification:	in vitro wheat germ expression system

Target Details

Target:	SH2D1B
Alternative Name:	SH2D1B (SH2D1B Products)

Target Details

Background:	Full Gene Name: SH2 domain containing 1B Synonyms: EAT2
Gene ID:	117157
NCBI Accession:	NM_053282
Pathways:	Regulation of Leukocyte Mediated Immunity , Positive Regulation of Immune Effector Process

Application Details

Application Notes:	Optimal working dilution should be determined by the investigator.
Comment:	Preparation method: in vitro, wheat germ expression system Product Quality tested by: 12.5% SDS-PAGE Stained with Coomassie Blue.
Restrictions:	For Research Use only

Handling

Buffer:	50 mM Tris-HCl, 10 mM reduced Glutathione, pH =8.0 in the elution buffer.
Handling Advice:	Aliquot to avoid repeated freezing and thawing.
Storage:	-80 °C
Storage Comment:	Best use within three months from the date of receipt of this protein.

Images

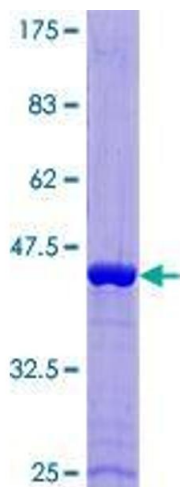


Image 1.