

Datasheet for ABIN1319865

**SH2D1B Protein (AA 54-132) (GST tag)**[Go to Product page](#)**1** Image

## Overview

Quantity:	10 µg
Target:	SH2D1B
Protein Characteristics:	AA 54-132
Origin:	Human
Source:	Wheat germ
Protein Type:	Recombinant
Purification tag / Conjugate:	This SH2D1B protein is labelled with GST tag.
Application:	ELISA, Western Blotting (WB), Affinity Purification (AP), Antibody Array (AA)

## Product Details

Purpose:	SH2D1B (Human) Recombinant Protein (Q01)
Sequence:	RIFREKHGYY RIQTAEGSPK QVFPSLKELI SKFEKPNQGM VVHLLKPIKR TSPSLRWRL KLELETFVNS NSDYVDVLP
Characteristics:	Human SH2D1B partial ORF ( NP_444512.2, 54 a.a. - 132 a.a.) recombinant protein with GST-tag at N-terminal.
Purification:	in vitro wheat germ expression system

## Target Details

Target:	SH2D1B
Alternative Name:	SH2D1B ( <a href="#">SH2D1B Products</a> )

### Target Details

Background:	Full Gene Name: SH2 domain containing 1B Synonyms: EAT2
Gene ID:	117157
NCBI Accession:	<a href="#">NM_053282</a>
Pathways:	<a href="#">Regulation of Leukocyte Mediated Immunity</a> , <a href="#">Positive Regulation of Immune Effector Process</a>

### Application Details

Application Notes:	Optimal working dilution should be determined by the investigator.
Comment:	Preparation method: in vitro, wheat germ expression system Product Quality tested by: 12.5% SDS-PAGE Stained with Coomassie Blue.
Restrictions:	For Research Use only

### Handling

Buffer:	50 mM Tris-HCl, 10 mM reduced Glutathione, pH =8.0 in the elution buffer.
Handling Advice:	Aliquot to avoid repeated freezing and thawing.
Storage:	-80 °C
Storage Comment:	Best use within three months from the date of receipt of this protein.

### Images

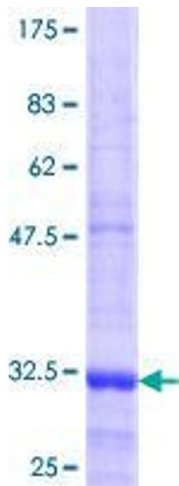


Image 1.