

Datasheet for ABIN1319870  
**SH2D3A Protein (AA 1-576) (GST tag)**



[Go to Product page](#)

1 Image

Overview

Quantity:	10 µg
Target:	SH2D3A
Protein Characteristics:	AA 1-576
Origin:	Human
Source:	Wheat germ
Protein Type:	Recombinant
Purification tag / Conjugate:	This SH2D3A protein is labelled with GST tag.
Application:	ELISA, Western Blotting (WB), Affinity Purification (AP), Antibody Array (AA)

Product Details

Purpose:	SH2D3A (Human) Recombinant Protein (P01)
Sequence:	<p>MQVPQDGEDL AGQPWYHGLL SRQKAEALLQ QNGDFLVRAS GSRGGNPVIS CRWRGSALHF EVFRVALRPR PGRPTALFQL EDEQFPSIPA LVHSYMTGRR PLSQATGAVV SRPVTWQGGL RRSFSEDTLM DGPARIEPLR ARKWSNSQPA DLAHMGRSRE DPAGMEASTM PISALPRTSS DPVLLKAPAP LGTVADSLRA SDGQLQAKAP TKPPRTPSFE LPDASERPPT YCELVPRVPS VQGTSPSQSC PEPEAPWWEA EEEEEENRC FTRPQAEISF CPHDAPSCLL GPQNRPLEPQ VLHTLRGLFL EHHPGSTALH LLLVDCQATG LLGVTRDQRG NMGVSSGLEL LTLPHGHHLR LELLERHQTL ALAGALAVLG CSGPLEERAA ALRGLVELAL ALRPGAAGDL PGLAAVMGAL LMPQVSRLEH TWRQLRRSHT EAALAFEQEL KPLMRALDEG AGPCDPGEVA LPHVAPMVRL LEGEEVAGPL DESCERLLRT LHGARHMVRD APKFRKVAQAQ RLRGFRPNPE LREALTTGFV RRLLWGSRGA GAPRAERFEK FQRVLGVLSQ RLEPDR</p>
Characteristics:	Human SH2D3A full-length ORF ( AAH06281.1, 1 a.a. - 576 a.a.) recombinant protein with GST-

## Product Details

---

tag at N-terminal.

Purification: in vitro wheat germ expression system

## Target Details

---

Target: SH2D3A

Alternative Name: SH2D3A ([SH2D3A Products](#))

Background: Full Gene Name: SH2 domain containing 3A  
Synonyms: NSP1

Gene ID: 10045

## Application Details

---

Application Notes: Optimal working dilution should be determined by the investigator.

Comment: Preparation method: in vitro, wheat germ expression system  
Product Quality tested by: 12.5% SDS-PAGE Stained with Coomassie Blue.

Restrictions: For Research Use only

## Handling

---

Buffer: 50 mM Tris-HCl, 10 mM reduced Glutathione, pH =8.0 in the elution buffer.

Handling Advice: Aliquot to avoid repeated freezing and thawing.

Storage: -80 °C

Storage Comment: Best use within three months from the date of receipt of this protein.

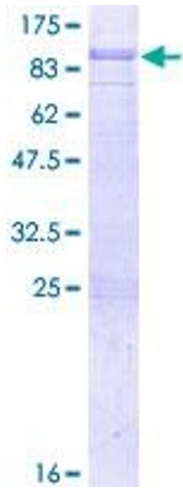


Image 1.