



[Go to Product page](#)

Datasheet for ABIN1319898

SH3GL1 Protein (AA 1-368) (GST tag)

1 Image

Overview

Quantity:	10 µg
Target:	SH3GL1
Protein Characteristics:	AA 1-368
Origin:	Human
Source:	Wheat germ
Protein Type:	Recombinant
Purification tag / Conjugate:	This SH3GL1 protein is labelled with GST tag.
Application:	ELISA, Western Blotting (WB), Affinity Purification (AP), Antibody Array (AA)

Product Details

Purpose:	SH3GL1 (Human) Recombinant Protein (P02)
Sequence:	MSVAGLKKQF YKASQLVSEK VGGAEGTKLD DDFKEMEKKV DVTSKAVTEV LARTIEYLQP NPASRAKLTM LNTVSKIRGQ VKNPGYPQSE GLLGECMIRH GKELGGESNF GDALLDAGES MKRLAEVKDS LDIEVKQNF I DPLQNLCEKD LKEIQHHLKK LEGRRLDFDY KKKRQGKIPD EELRQALEKF EESKEVAETS MHNLLETDIE QVSQLSALVD AQLDYHRQAV QILDELAEKL KRRMREASSR PKREYKPKPR EPFDLGEPEQ SNGGFPCTTA PKIAASSSFR SSDKPIRTPS RSMPPLDQPS CKALYDFEPE NDGELGFHEG DVITLTNQID ENWYEGMLDG QSGFFPLSYV EVLVPLPQ
Characteristics:	Human SH3GL1 full-length ORF (NP_003016.1, 1 a.a. - 368 a.a.) recombinant protein with GST-tag at N-terminal.
Purification:	in vitro wheat germ expression system

Target Details

Target:	SH3GL1
Alternative Name:	SH3GL1 (SH3GL1 Products)
Background:	Full Gene Name: SH3-domain GRB2-like 1 Synonyms: CNSA1,EEN,MGC111371,SH3D2B,SH3P8
Gene ID:	6455
NCBI Accession:	NM_003025

Application Details

Application Notes:	Optimal working dilution should be determined by the investigator.
Comment:	Preparation method: in vitro, wheat germ expression system Product Quality tested by: 12.5% SDS-PAGE Stained with Coomassie Blue.
Restrictions:	For Research Use only

Handling

Buffer:	50 mM Tris-HCl, 10 mM reduced Glutathione, pH =8.0 in the elution buffer.
Handling Advice:	Aliquot to avoid repeated freezing and thawing.
Storage:	-80 °C
Storage Comment:	Best use within three months from the date of receipt of this protein.

Images

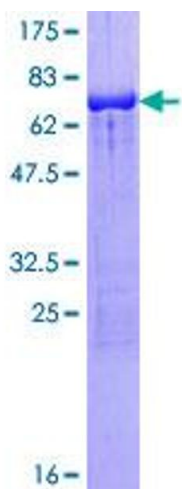


Image 1.