



[Go to Product page](#)

Datasheet for ABIN1319912

## SH3GLB2 Protein (AA 1-395) (GST tag)

### 1 Image

#### Overview

Quantity:	10 µg
Target:	SH3GLB2
Protein Characteristics:	AA 1-395
Origin:	Human
Source:	Wheat germ
Protein Type:	Recombinant
Purification tag / Conjugate:	This SH3GLB2 protein is labelled with GST tag.
Application:	ELISA, Western Blotting (WB), Affinity Purification (AP), Antibody Array (AA)

#### Product Details

Purpose:	SH3GLB2 (Human) Recombinant Protein (P01)
Sequence:	MDFNMKKLAS DAGIFFTRAV QFTEEKFGQA EKTELDAHFE NLLARADSTK NWTEKILRQT EVLLQPNPSA RVEEFLEYEKL DRKVPSRVTN GELLAQYMAD AASELGPTTP YGKTLIKVAE AEKQLGAAER DFIHTASISF LTPLRNFLEG DWKTISKERR LLQNRRLDLD ACKARLKKAK AAEAKATTVP DFQETRPRNY ILSASASALW NDEVDKAEQE LRVAQTEFDR QAEVTRLLLE GISSTHVNHL RCLHEFVKSQ TTYAQCYRH MLDLQQLGR FPGTFVGTTE PASPPLSSTS PTTAVATMPV VPSVASLAPP GEASLCLEEV APPASGTRKA RVLYDYEAAD SSELALLADE LITVYSLPGM DPDWLIGERG NKKGKVPPTY LELLS
Characteristics:	Human SH3GLB2 full-length ORF ( NP_064530.1, 1 a.a. - 395 a.a.) recombinant protein with GST-tag at N-terminal.
Purification:	in vitro wheat germ expression system

## Target Details

Target:	SH3GLB2
Alternative Name:	SH3GLB2 ( <a href="#">SH3GLB2 Products</a> )
Background:	Full Gene Name: SH3-domain GRB2-like endophilin B2 Synonyms: KIAA1848,PP6569,PP9455
Gene ID:	56904
NCBI Accession:	<a href="#">NM_020145</a>

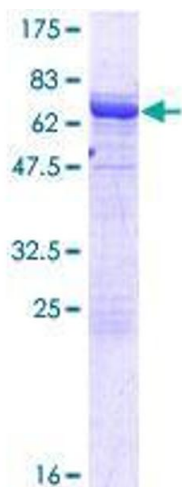
## Application Details

Application Notes:	Optimal working dilution should be determined by the investigator.
Comment:	Preparation method: in vitro, wheat germ expression system Product Quality tested by: 12.5% SDS-PAGE Stained with Coomassie Blue.
Restrictions:	For Research Use only

## Handling

Buffer:	50 mM Tris-HCl, 10 mM reduced Glutathione, pH =8.0 in the elution buffer.
Handling Advice:	Aliquot to avoid repeated freezing and thawing.
Storage:	-80 °C
Storage Comment:	Best use within three months from the date of receipt of this protein.

## Images



**Image 1.**