

Datasheet for ABIN1319922  
**SH3YL1 Protein (AA 1-323) (GST tag)**



[Go to Product page](#)

1 Image

Overview

Quantity:	10 µg
Target:	SH3YL1
Protein Characteristics:	AA 1-323
Origin:	Human
Source:	Wheat germ
Protein Type:	Recombinant
Purification tag / Conjugate:	This SH3YL1 protein is labelled with GST tag.
Application:	ELISA, Western Blotting (WB), Affinity Purification (AP), Antibody Array (AA)

Product Details

Purpose:	SH3YL1 (Human) Recombinant Protein (P01)
Sequence:	MNNPIPSNLK SEAKKAAIL REFTEITSRN GPKIIPAHV IAKAKGLAIL SVIKAGFLVT ARGGSGIVVA RLPDGKWSAP SAIGIAGLGG GFEIGIEVSD LVIILNYDRA VEAFKGGNL TLGGNLTAVV GPLGRNLEGN VALRSSAAVF TYCKSRGLFA GVSLEGSLI ERKETNRKFY CQDIRAYDIL FGDTPRPAQA EDLYEILDSF TEKYENEGQR INARKAAREQ RKSSAKELPP KPLSRPQSS APVQLNSGSQ SNLNQPIEVT ALYSFEGQQP GDLNFQAGDR ITVISKTDSH FDWWEGLRG QTGIFPANYV TMN
Characteristics:	Human SH3YL1 full-length ORF ( AAH08375.1, 1 a.a. - 323 a.a.) recombinant protein with GST-tag at N-terminal.
Purification:	in vitro wheat germ expression system

## Target Details

Target:	SH3YL1
Alternative Name:	SH3YL1 ( <a href="#">SH3YL1 Products</a> )
Background:	Full Gene Name: SH3 domain containing, Ysc84-like 1 ( <i>S. cerevisiae</i> ) Synonyms: DKFZp586F1318,FLJ39121,Ray
Gene ID:	26751

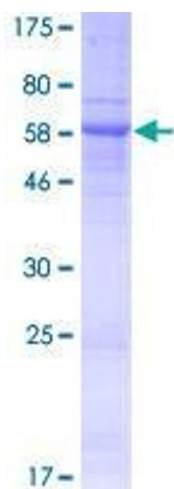
## Application Details

Application Notes:	Optimal working dilution should be determined by the investigator.
Comment:	Preparation method: in vitro, wheat germ expression system Product Quality tested by: 12.5% SDS-PAGE Stained with Coomassie Blue.
Restrictions:	For Research Use only

## Handling

Buffer:	50 mM Tris-HCl, 10 mM reduced Glutathione, pH =8.0 in the elution buffer.
Handling Advice:	Aliquot to avoid repeated freezing and thawing.
Storage:	-80 °C
Storage Comment:	Best use within three months from the date of receipt of this protein.

## Images



**Image 1.**