



[Go to Product page](#)

Datasheet for ABIN1319926

## SHARPIN Protein (AA 1-326) (GST tag)

### 1 Image

#### Overview

Quantity:	10 µg
Target:	SHARPIN
Protein Characteristics:	AA 1-326
Origin:	Human
Source:	Wheat germ
Protein Type:	Recombinant
Purification tag / Conjugate:	This SHARPIN protein is labelled with GST tag.
Application:	ELISA, Western Blotting (WB), Affinity Purification (AP), Antibody Array (AA)

#### Product Details

Purpose:	SHARPIN (Human) Recombinant Protein (P01)
Sequence:	MAPPAGGAAA AASDLGSAAV LLAVHAAVRP LGAGPDAAEQ LRRQLSADP ERPGRFRLEL LGAGPGAVNL EWPLESVSYT IRGPTQHELQ PPPGGPGTLS LHFLNPQEAQ RWAVLVRGAT VEGQNGSKSN SPPALGPEAC PVSLPSPPEA STLKGPPEA DLPRSPGNLT EREELAGSLA RAIAGGDEKG AAQVAAVLAQ HRVALSVQLQ EACFPPGPIR LQVTLEDAAS AASAASSAHV ALQVHPHCTV AALQEQVFSE LGFPPAVQRW VIGRCLCVPE RSLASYGVRQ DGDPAFLYLL SAPREAPAQL VLSFLHLHQC PRPPWL
Characteristics:	Human SHARPIN full-length ORF ( AAH25244.1, 1 a.a. - 326 a.a.) recombinant protein with GST-tag at N-terminal.
Purification:	in vitro wheat germ expression system

## Target Details

Target:	SHARPIN
Alternative Name:	SHARPIN ( <a href="#">SHARPIN Products</a> )
Background:	Full Gene Name: SHANK-associated RH domain interactor Synonyms: DKFZp434N1923,SIPL1
Gene ID:	81858

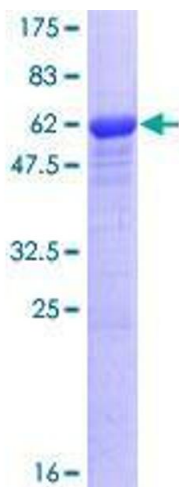
## Application Details

Application Notes:	Optimal working dilution should be determined by the investigator.
Comment:	Preparation method: in vitro, wheat germ expression system Product Quality tested by: 12.5% SDS-PAGE Stained with Coomassie Blue.
Restrictions:	For Research Use only

## Handling

Buffer:	50 mM Tris-HCl, 10 mM reduced Glutathione, pH =8.0 in the elution buffer.
Handling Advice:	Aliquot to avoid repeated freezing and thawing.
Storage:	-80 °C
Storage Comment:	Best use within three months from the date of receipt of this protein.

## Images



**Image 1.**