

Datasheet for ABIN1319932
SHC1 Protein (AA 171-280) (GST tag)



[Go to Product page](#)

1 Image

Overview

Quantity:	10 µg
Target:	SHC1
Protein Characteristics:	AA 171-280
Origin:	Human
Source:	Wheat germ
Protein Type:	Recombinant
Purification tag / Conjugate:	This SHC1 protein is labelled with GST tag.
Application:	Western Blotting (WB), ELISA, Affinity Purification (AP), Antibody Array (AA)

Product Details

Purpose:	SHC1 (Human) Recombinant Protein (Q01)
Sequence:	QTPSHLGATL PVGQPVGGDP EVRKQMPPPP PCPGRELFDD PSYVNVQNLD KARQAVGGAG PPNPAINGSA PRDLFDMKPF EDALRVPPPP QSVSMAEQLR GEPWFH GKLS
Characteristics:	Human SHC1 partial ORF (AAH33925, 171 a.a. - 280 a.a.) recombinant protein with GST-tag at N-terminal.
Purification:	in vitro wheat germ expression system

Target Details

Target:	SHC1
Alternative Name:	SHC1 (SHC1 Products)

Target Details

Background: Full Gene Name: SHC (Src homology 2 domain containing) transforming protein 1
Synonyms: FLJ26504,SHC,SHCA

Gene ID: 6464

Pathways: [RTK Signaling](#), [TCR Signaling](#), [Fc-epsilon Receptor Signaling Pathway](#), [EGFR Signaling Pathway](#), [Neurotrophin Signaling Pathway](#), [ER-Nucleus Signaling](#), [Signaling Events mediated by VEGFR1 and VEGFR2](#)

Application Details

Application Notes: Optimal working dilution should be determined by the investigator.

Comment: Preparation method: in vitro, wheat germ expression system
Product Quality tested by: 12.5% SDS-PAGE Stained with Coomassie Blue.

Restrictions: For Research Use only

Handling

Buffer: 50 mM Tris-HCl, 10 mM reduced Glutathione, pH =8.0 in the elution buffer.

Handling Advice: Aliquot to avoid repeated freezing and thawing.

Storage: -80 °C

Storage Comment: Best use within three months from the date of receipt of this protein.

Images

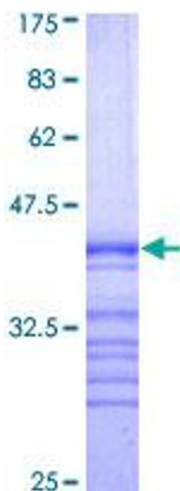


Image 1.