

Datasheet for ABIN1319935
SHC2 Protein (AA 718-829) (GST tag)



[Go to Product page](#)

1 Image

Overview

Quantity:	10 µg
Target:	SHC2
Protein Characteristics:	AA 718-829
Origin:	Human
Source:	Wheat germ
Protein Type:	Recombinant
Purification tag / Conjugate:	This SHC2 protein is labelled with GST tag.
Application:	Western Blotting (WB), ELISA, Affinity Purification (AP), Antibody Array (AA)

Product Details

Purpose:	SHC2 (Human) Recombinant Protein (Q01)
Sequence:	LALTQPCALT ALDQGPSPSL RDACSLPWDV GSTGTAPPGD GYVQADARGP PDHEEHLYVN TQGLDAPEPE DSPKKDLFDM RPFEDALKLH ECSVAAGVTA APLPLEDQWP SP
Characteristics:	Human SHC2 partial ORF (XP_375550, 718 a.a. - 829 a.a.) recombinant protein with GST-tag at N-terminal.
Purification:	in vitro wheat germ expression system

Target Details

Target:	SHC2
Alternative Name:	SHC2 (SHC2 Products)

Target Details

Background:	Full Gene Name: SHC (Src homology 2 domain containing) transforming protein 2 Synonyms: SCK,SHCB,SLI
Gene ID:	25759
NCBI Accession:	XM_375550
Pathways:	RTK Signaling , Neurotrophin Signaling Pathway , Signaling Events mediated by VEGFR1 and VEGFR2 , VEGFR1 Specific Signals , VEGF Signaling

Application Details

Application Notes:	Optimal working dilution should be determined by the investigator.
Comment:	Preparation method: in vitro, wheat germ expression system Product Quality tested by: 12.5% SDS-PAGE Stained with Coomassie Blue.
Restrictions:	For Research Use only

Handling

Buffer:	50 mM Tris-HCl, 10 mM reduced Glutathione, pH =8.0 in the elution buffer.
Handling Advice:	Aliquot to avoid repeated freezing and thawing.
Storage:	-80 °C
Storage Comment:	Best use within three months from the date of receipt of this protein.

Images

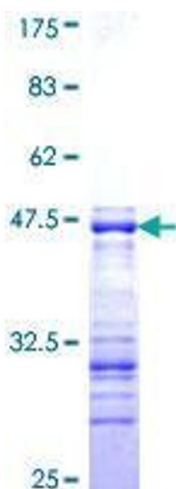


Image 1.