

Datasheet for ABIN1319937  
**SHC3 Protein (AA 1-594) (GST tag)**



[Go to Product page](#)

1 Image

## Overview

Quantity:	10 µg
Target:	SHC3
Protein Characteristics:	AA 1-594
Origin:	Human
Source:	Wheat germ
Protein Type:	Recombinant
Purification tag / Conjugate:	This SHC3 protein is labelled with GST tag.
Application:	Western Blotting (WB), ELISA, Affinity Purification (AP), Antibody Array (AA)

## Product Details

Purpose:	SHC3 (Human) Recombinant Protein (P01)
Sequence:	MLPRTKYNRF RND SVTSVDD LLHSLSVSGG GGVSAARAT PAAAPYLVSG EALRKAPVDG PGS LGHLLHK VSHLKLSSSG L RGLSSAARE RAGARLSGSC SAPSLAAPDG SAPSAPRAPA MSAARKGRPG DEPLPRPPRG APHASDQVLG PGVTYVVKYL GCIEVLRSMR SLDFSTRTQI TREAISRVCE AVPGAKGAFK KRKPPSKMLS SILGKSNLQF AGMSISLTIS TASNLRTPD SKQIIANHHM RSISFASGGD PDDTDYVAYV TKDPVNRAC HILECCDGLA QDVISIGQA FELRFKQYLQ CPTKIPALHD RMQSLDEPWT EEEGDGSDHP YYNSIPSKMP PPGGFLDTRL KPRPHAPDTA QFAGKEQTY Y QGRHLGDTFG EDWQQTPLRQ GSSDIYSTPE GKLHVAPTGE APTYVNTQ QI PPQAWPAAVS SAESSPRKDL FDMKPFEDAL KNQPLGPVLS KAASVECISP VSPRAPDAKM LEELQAETWY QGEMSRKEAE GLLLEKDGDFL VRKSTTNP GS FVLTGMHNGQ AKHLLLVDPE GTIQTKDRVF DSISHLINHH LESSLPVISA GSELCLQQP V ERKQ
Characteristics:	Human SHC3 full-length ORF ( NP_058544.2, 1 a.a. - 594 a.a.) recombinant protein with GST-

## Product Details

---

tag at N-terminal.

Purification: in vitro wheat germ expression system

## Target Details

---

Target: SHC3

Alternative Name: SHC3 ([SHC3 Products](#))

Background: Full Gene Name: SHC (Src homology 2 domain containing) transforming protein 3  
Synonyms: N-Shc,NSHC,RAI,SHCC

Gene ID: 53358

NCBI Accession: [NM\\_016848](#)

Pathways: [RTK Signaling](#), [EGFR Signaling Pathway](#), [Neurotrophin Signaling Pathway](#)

## Application Details

---

Application Notes: Optimal working dilution should be determined by the investigator.

Comment: Preparation method: in vitro, wheat germ expression system  
Product Quality tested by: 12.5% SDS-PAGE Stained with Coomassie Blue.

Restrictions: For Research Use only

## Handling

---

Buffer: 50 mM Tris-HCl, 10 mM reduced Glutathione, pH =8.0 in the elution buffer.

Handling Advice: Aliquot to avoid repeated freezing and thawing.

Storage: -80 °C

Storage Comment: Best use within three months from the date of receipt of this protein.

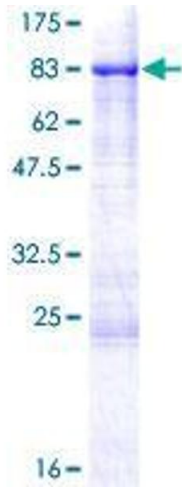


Image 1.