

Datasheet for ABIN1319947

Sonic Hedgehog Protein (SHH) (AA 181-280) (GST tag)



[Go to Product page](#)

1 Image

Overview

Quantity:	10 µg
Target:	Sonic Hedgehog (SHH)
Protein Characteristics:	AA 181-280
Origin:	Human
Source:	Wheat germ
Protein Type:	Recombinant
Purification tag / Conjugate:	This Sonic Hedgehog protein is labelled with GST tag.
Application:	Western Blotting (WB), ELISA, Affinity Purification (AP), Antibody Array (AA)

Product Details

Purpose:	SHH (Human) Recombinant Protein (Q01)
Sequence:	IHCSVKAENS VAAKSGGCFP GSATVHLEQG GTKLVKDLSP GDRVLAADDQ GRLLYSDFLT FLDRDDGAKK VFYVIETREP RERLLLTA AH LLFVAPHNDS
Characteristics:	Human SHH partial ORF (NP_000184, 181 a.a. - 280 a.a.) recombinant protein with GST-tag at N-terminal.
Purification:	in vitro wheat germ expression system

Target Details

Target:	Sonic Hedgehog (SHH)
Alternative Name:	SHH (SHH Products)

Target Details

Background:	Full Gene Name: sonic hedgehog homolog (Drosophila) Synonyms: HHG1,HLP3,HPE3,MCOPCB5,SMMCI,TPT,TPTPS
Gene ID:	6469
NCBI Accession:	NM_000193
Pathways:	Hedgehog Signaling , Dopaminergic Neurogenesis , Regulation of Muscle Cell Differentiation , Tube Formation , Skeletal Muscle Fiber Development

Application Details

Application Notes:	Optimal working dilution should be determined by the investigator.
Comment:	Preparation method: in vitro, wheat germ expression system Product Quality tested by: 12.5% SDS-PAGE Stained with Coomassie Blue.
Restrictions:	For Research Use only

Handling

Buffer:	50 mM Tris-HCl, 10 mM reduced Glutathione, pH =8.0 in the elution buffer.
Handling Advice:	Aliquot to avoid repeated freezing and thawing.
Storage:	-80 °C
Storage Comment:	Best use within three months from the date of receipt of this protein.

Images

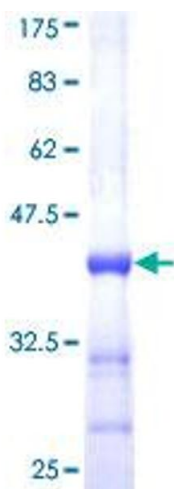


Image 1.