



[Go to Product page](#)

Datasheet for ABIN1319955

SHMT2 Protein (AA 1-504) (GST tag)

1 Image

Overview

Quantity:	25 µg
Target:	SHMT2
Protein Characteristics:	AA 1-504
Origin:	Human
Source:	Wheat germ
Protein Type:	Recombinant
Purification tag / Conjugate:	This SHMT2 protein is labelled with GST tag.
Application:	Western Blotting (WB), ELISA, Affinity Purification (AP), Antibody Array (AA)

Product Details

Purpose:	SHMT2 (Human) Recombinant Protein (P01)
Sequence:	MLYFSLFWAA RPLQRCGQLV RMAIRAQHSN AAQTQTGEAN RGWTGQESLS DSDPEMWELL QREKDRQCRG LELIASENFC SRAALEALGS CLNNKYSEGY PGKRYYGGAEE VVDEIELLCQ RRALEAFDLD PAQWGVNVQP YSGSPANLAV YTALLQPHDR IMGLDLPDGG HLTHGYMSDV KRISATSIFF ESMYPYKLNPK TGLIDYNQLA LTARLFRPRL IIAGTSAYAR LIDYARMREV CDEVKAHLLA DMAHISGLVA AKVIPSPFKH ADIVTTTTHK TLRGARSGLI FYRKGVKAVD PKTGREIPYT FEDRINFAVF PSLQGGPHNH AIAAVAVALK QACTPMFREY SLQVLKNARA MADALLERGY SLVSGGTDNH LVLVDLRPKG LDGARAERVL ELVSITANKN TPCGDRSAIT PGGLRLGAPA LTSRQFREDD FRRVDFIDE GVNIGLEVKS KTAKLQDFKS FLLKDSETSQ RLANLRQRVE QFARAFMPMG FDEH
Characteristics:	Human SHMT2 full-length ORF (NP_005403.2, 1 a.a. - 504 a.a.) recombinant protein with GST-tag at N-terminal.

Product Details

Purification: in vitro wheat germ expression system

Target Details

Target: SHMT2

Alternative Name: SHMT2 ([SHMT2 Products](#))

Background: Full Gene Name: serine hydroxymethyltransferase 2 (mitochondrial)
Synonyms: GLYA,SHMT

Gene ID: 6472

NCBI Accession: [NM_005412](#)

Application Details

Application Notes: Optimal working dilution should be determined by the investigator.

Comment: Preparation method: in vitro, wheat germ expression system
Product Quality tested by: 12.5% SDS-PAGE Stained with Coomassie Blue.

Restrictions: For Research Use only

Handling

Buffer: 50 mM Tris-HCl, 10 mM reduced Glutathione, pH =8.0 in the elution buffer.

Handling Advice: Aliquot to avoid repeated freezing and thawing.

Storage: -80 °C

Storage Comment: Best use within three months from the date of receipt of this protein.

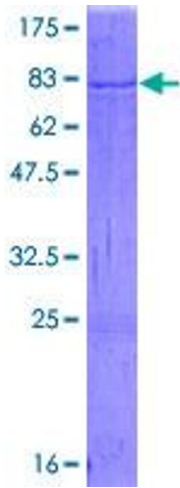


Image 1.