



[Go to Product page](#)

Datasheet for ABIN1319960

SHOX2 Protein (AA 1-355) (GST tag)

1 Image

Overview

Quantity:	25 µg
Target:	SHOX2
Protein Characteristics:	AA 1-355
Origin:	Human
Source:	Wheat germ
Protein Type:	Recombinant
Purification tag / Conjugate:	This SHOX2 protein is labelled with GST tag.
Application:	ELISA, Western Blotting (WB), Affinity Purification (AP), Antibody Array (AA)

Product Details

Purpose:	SHOX2 (Human) Recombinant Protein (P01)
Sequence:	MEELTAFVSK SFDQKVKEKK EAITYREVLE SGPLRGAKEP TGCTEAGRDD RSPPAVRAAG GGGGGGGGGG GGGGGGGVGG GGAGGGAGGG RSPVRELDMG AAERSREPGS PRLTEGRRKP TKAEVQATLL LPGEAFRFLV SPELKDRKED AKGMEDEGQT KIKQRRSRTN FTLEQLNELE RLFDETHYPD AFMREELSQR LGLSEARVQV WFQNRRAKCR KQENQLHKGV LIGAASQFEA CRVAPYVNVG ALRMPFQQDS HCNVTPLSFQ VQAQLQLDSA VAHAHHHLHP HLAAHAPYMM FPAPPFGLPL ATLAADSASA ASVVAASAAA KTTSKNSSIA DLRLKAKKHA AALGL
Characteristics:	Human SHOX2 full-length ORF (AAH08829.1, 1 a.a. - 355 a.a.) recombinant protein with GST-tag at N-terminal.
Purification:	in vitro wheat germ expression system

Target Details

Target:	SHOX2
Alternative Name:	SHOX2 (SHOX2 Products)
Background:	Full Gene Name: short stature homeobox 2 Synonyms: OG12,OG12X,OGI2X,SHOT
Gene ID:	6474
Pathways:	Regulation of Muscle Cell Differentiation, Skeletal Muscle Fiber Development

Application Details

Application Notes:	Optimal working dilution should be determined by the investigator.
Comment:	Preparation method: in vitro, wheat germ expression system Product Quality tested by: 12.5% SDS-PAGE Stained with Coomassie Blue.
Restrictions:	For Research Use only

Handling

Buffer:	50 mM Tris-HCl, 10 mM reduced Glutathione, pH =8.0 in the elution buffer.
Handling Advice:	Aliquot to avoid repeated freezing and thawing.
Storage:	-80 °C
Storage Comment:	Best use within three months from the date of receipt of this protein.

Images

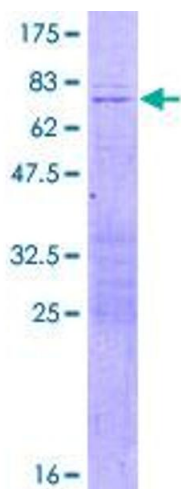


Image 1.