



[Go to Product page](#)

Datasheet for ABIN1319965

## SHPRH Protein (AA 1560-1659) (GST tag)

### 1 Image

#### Overview

Quantity:	10 µg
Target:	SHPRH
Protein Characteristics:	AA 1560-1659
Origin:	Human
Source:	Wheat germ
Protein Type:	Recombinant
Purification tag / Conjugate:	This SHPRH protein is labelled with GST tag.
Application:	Affinity Purification (AP), Antibody Array (AA), ELISA, Western Blotting (WB)

#### Product Details

Purpose:	SHPRH (Human) Recombinant Protein (Q01)
Sequence:	AQISRVKTFQ ENLSAFKRDP QINILLPLH TGSNGLTIE ATHVLLVEPI LNPAHELQAI GRVHRIGQTK PTIVHRFLIK ATIEERMQAM LKTAERSIYI
Characteristics:	Human SHPRH partial ORF ( NP_775105, 1560 a.a. - 1659 a.a.) recombinant protein with GST-tag at N-terminal.
Purification:	in vitro wheat germ expression system

#### Target Details

Target:	SHPRH
Alternative Name:	SHPRH ( <a href="#">SHPRH Products</a> )

## Target Details

Background:	Full Gene Name: SNF2 histone linker PHD RING helicase Synonyms: FLJ27258,FLJ37625,FLJ45012,FLJ90837,KIAA2023,MGC134886,bA545I5.2
Gene ID:	257218
NCBI Accession:	<a href="#">NM_173082</a>

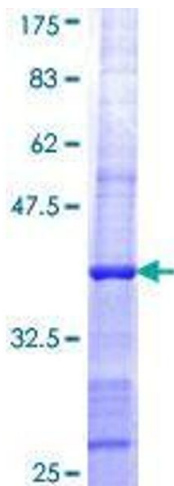
## Application Details

Application Notes:	Optimal working dilution should be determined by the investigator.
Comment:	Preparation method: in vitro, wheat germ expression system Product Quality tested by: 12.5% SDS-PAGE Stained with Coomassie Blue.
Restrictions:	For Research Use only

## Handling

Buffer:	50 mM Tris-HCl, 10 mM reduced Glutathione, pH =8.0 in the elution buffer.
Handling Advice:	Aliquot to avoid repeated freezing and thawing.
Storage:	-80 °C
Storage Comment:	Best use within three months from the date of receipt of this protein.

## Images



**Image 1.**