



[Go to Product page](#)

Datasheet for ABIN1319967

## SHQ1 Protein (AA 1-577) (GST tag)

### 1 Image

#### Overview

Quantity:	10 µg
Target:	SHQ1
Protein Characteristics:	AA 1-577
Origin:	Human
Source:	Wheat germ
Protein Type:	Recombinant
Purification tag / Conjugate:	This SHQ1 protein is labelled with GST tag.
Application:	Western Blotting (WB), ELISA, Affinity Purification (AP), Antibody Array (AA)

#### Product Details

Purpose:	SHQ1 (Human) Recombinant Protein (P01)
Sequence:	MLTPAFDLSQ DPDFLTIAIR VPYARVSEFD VYFEGSDFKF YAKPYFLRLT LPGRIVENGSEQGSYDADKG IFTIRLPKET PGQHFEGLNM LTALLAPRKS RTAKPLVEEI GASEIPEEVVDDEEFDWEIE QTPCEEVSEI ALNPQCHYGF GNLRSGVLQR LQDELSVID IKDPDFTPAAERRQKRLAAE LAKFDPDHYL ADFFEDAIE QILKYNPWWT DKYSKMMMAFL EKSQEENHATLVSFSEEEK YQLRKFNKS YLLDKRACRQ VCYSIDILL AYCETRVT GEKNVESAWNIRKLSPTLCW FETWTNVHDI MVSFGRRLVLC YPLYRHFCLV MKAYRDTIKI LQLGKSAVLKCLLDIHKIFQ ENDPAYILND LYISDYCVWI QKVKSKKLA LAEALKEVSL TKAQLGLEIELEAAALLVQ EEETALKAAH SVSGQQLCS SSEASDSEDS DSSVSSGNED SGSDSEQDELKDSPSETVSS LQGPFLSESS AFLIVDGGVR RNTAIQESDA SQGKPLASSW PLGVSGPLIEELGEQLKTTV QVSEPKGTTA VNRSNIQERD GCQTPNN
Characteristics:	Human SHQ1 full-length ORF ( AAH47879.1, 1 a.a. - 577 a.a.) recombinant protein with GST-tag

## Product Details

---

at N-terminal.

Purification: in vitro wheat germ expression system

## Target Details

---

Target: SHQ1

Alternative Name: SHQ1 ([SHQ1 Products](#))

Background: Full Gene Name: SHQ1 homolog (S. cerevisiae)  
Synonyms: DKFZp686H07226,FLJ10539

Gene ID: 55164

Pathways: [Ribonucleoprotein Complex Subunit Organization](#)

## Application Details

---

Application Notes: Optimal working dilution should be determined by the investigator.

Comment: Preparation method: in vitro, wheat germ expression system  
Product Quality tested by: 12.5% SDS-PAGE Stained with Coomassie Blue.

Restrictions: For Research Use only

## Handling

---

Buffer: 50 mM Tris-HCl, 10 mM reduced Glutathione, pH =8.0 in the elution buffer.

Handling Advice: Aliquot to avoid repeated freezing and thawing.

Storage: -80 °C

Storage Comment: Best use within three months from the date of receipt of this protein.

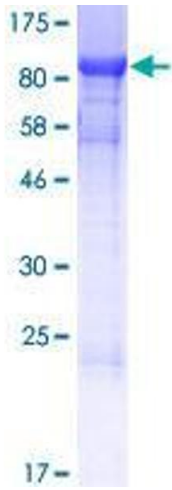


Image 1.