

Datasheet for ABIN1319985
SIGLEC12 Protein (AA 1-595) (GST tag)



[Go to Product page](#)

1 Image

Overview

Quantity:	10 µg
Target:	SIGLEC12
Protein Characteristics:	AA 1-595
Origin:	Human
Source:	Wheat germ
Protein Type:	Recombinant
Purification tag / Conjugate:	This SIGLEC12 protein is labelled with GST tag.
Application:	Western Blotting (WB), ELISA, Affinity Purification (AP), Antibody Array (AA)

Product Details

Purpose:	SIGLEC12 (Human) Recombinant Protein (P01)
Sequence:	MLLLLLLLLPP LLCGRVGAKE QKDYLLTMQK SVTVQEGLCV SVLCSFSYPQ NGWTASDPVH GYWFRAGDHV SRNIPVATNN PARAVQEETR DRFHLLGDPQ NKDCTLSIRD TRES DAGTYV FCVERGNMKW NYKYDQLSVN VTASQDLLSR YRLEVPESVT VQEGLCVSVP CSVLYPHYNW TASSPVYGSW FKEGADIPWD IPVATNTPSG KVQEDTHGRF LLLGDPQTNN CSLSIRDARK GDSGKYFQV ERGSRKWNYY YDKLSVHVTA LTHMPTFSIP GTLESGHPRN LTCSVPWACE QGTPPTITWM GASVSSLDPT ITRSSMLSLI PQPQDHGTSL TCQVTLPGAG VTMTRAVRLN ISYPPQNLTM TVFQGDGTAS TTLRNGSALS VLEGQSLHLV CAVDSNPPAR LSWTWGSLTL SPSQSSNLGV LELPRVHVKD EGEFTCRAQN PLGSQHISLS LSLQNEYTGK MRPISGVTLG AFGGAGATAL VFLYFCIIFV VVRSCRKSA RPAVGVGDTG MEDANAVRGS ASQGPLIESP ADDSPPHHAP PALATPSPEE GEIQYASLSF HKARPQYPQE QEAIGYEYSE INIPK
Characteristics:	Human SIGLEC12 full-length ORF (NP_443729.1, 1 a.a. - 595 a.a.) recombinant protein with

Product Details

GST-tag at N-terminal.

Purification: in vitro wheat germ expression system

Target Details

Target: SIGLEC12

Alternative Name: SIGLEC12 ([SIGLEC12 Products](#))

Background: Gene: sialic acid binding Ig-like lectin 12
Synonyms: FLJ38600, S2V, SIGLECL1, SLG, Siglec-12, Siglec-L1, Siglec-XII

Gene ID: 89858

NCBI Accession: [NM_053003](#)

Application Details

Application Notes: Optimal working dilution should be determined by the investigator.

Restrictions: For Research Use only

Handling

Buffer: 50 mM Tris-HCl, 10 mM reduced Glutathione, pH =8.0 in the elution buffer.

Handling Advice: Aliquot to avoid repeated freezing and thawing.

Storage: -80 °C

Storage Comment: Best use within three months from the date of receipt of this protein.

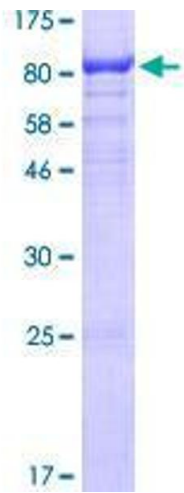


Image 1.