

Datasheet for ABIN1319993
SIGLEC6 Protein (AA 1-437) (GST tag)



[Go to Product page](#)

1 Image

Overview

Quantity:	10 µg
Target:	SIGLEC6
Protein Characteristics:	AA 1-437
Origin:	Human
Source:	Wheat germ
Protein Type:	Recombinant
Purification tag / Conjugate:	This SIGLEC6 protein is labelled with GST tag.
Application:	Western Blotting (WB), ELISA, Affinity Purification (AP), Antibody Array (AA)

Product Details

Purpose:	SIGLEC6 (Human) Recombinant Protein (P01)
Sequence:	<p>MQGAQEASAS EMLPLLLPLL WAGALAQERR FQLEGPESLT VQEGLCVLVP CRLPTTLPAS YYGYGYWFLE GADVPVATND PDEEVQEETR GRFHLLWDPR RKNCSLSIRD ARRRDNAAYF FRLKSKWMKY GYTSSKLSVR VMALTHRPN I SIPGTLESGH PSNLTCVSPW VCEQGTPPIF SWMSAAPTSL GPRTTQSSVL TITPRPQDHS TNLTCQVTFP GAGVTMERTI QLVNSSFKIL QNTSSLPVLE GQALRLLCDA DGNPPAHL SW FQGFPALNAT PISNTGVLEL PQVGSAAEGD FTCRAQHPLG SLQISLSLFV HWKPEGRAGG VLGAVWGASI TTLVFLCVCF IFRVKTRRKK AAQPVQNTDD VNPVMVSGSR GHQHQTGI VSDHPAEAGP ISEDEQELHY AVLHFHKVQP QEPKVTDEY SEIKIHK</p>
Characteristics:	Human SIGLEC6 full-length ORF (ENSP00000344064, 1 a.a. - 437 a.a.) recombinant protein with GST-tag at N-terminal.

Product Details

Purification: in vitro wheat germ expression system

Target Details

Target: SIGLEC6

Alternative Name: SIGLEC6 ([SIGLEC6 Products](#))

Background: Full Gene Name: sialic acid binding Ig-like lectin 6
Synonyms: CD327,CD33L,CD33L1,CDw327,OBBP1,SIGLEC-6

Gene ID: 946

Application Details

Application Notes: Optimal working dilution should be determined by the investigator.

Comment: Preparation method: in vitro, wheat germ expression system
Product Quality tested by: 12.5% SDS-PAGE Stained with Coomassie Blue.

Restrictions: For Research Use only

Handling

Buffer: 50 mM Tris-HCl, 10 mM reduced Glutathione, pH =8.0 in the elution buffer.

Handling Advice: Aliquot to avoid repeated freezing and thawing.

Storage: -80 °C

Storage Comment: Best use within three months from the date of receipt of this protein.

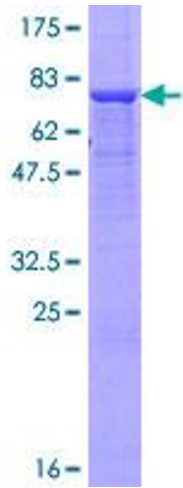


Image 1.