



[Go to Product page](#)

Datasheet for ABIN1320029

SIPA1L2 Protein (AA 1-532) (GST tag)

1 Image

Overview

Quantity:	10 µg
Target:	SIPA1L2
Protein Characteristics:	AA 1-532
Origin:	Human
Source:	Wheat germ
Protein Type:	Recombinant
Purification tag / Conjugate:	This SIPA1L2 protein is labelled with GST tag.
Application:	Affinity Purification (AP), Antibody Array (AA), ELISA, Western Blotting (WB)

Product Details

Purpose:	SIPA1L2 (Human) Recombinant Protein (P01)
Sequence:	MEASRHPETK WHGPPSKVLG SYKERALQKD GSCKDSPNKL SHIGDKSCSS HSSSNTLSSN TSSNSDDKHF GSGDLMDPEL LGLTYIKGAS TDSGIDTAPC MPATILGPVH LAGSRSLIHS RAEQWADAAD VSGPDDEPAK LYSVHGYASA ISAGSAAEGS MGDLEISSH SSGSHHSGSP SAHCSKSSGS LDSSKVYIVS HSSGQQVPGS MSKPYHRQGA VNKYVIGWKK SEGSPPEEP EVTECPGMYS EMDVMSTATQ HQTVVGDAVA ETQHVLSKED FLKLMLPDSP LVEEGRRKFS FYGNLSPRRS LYRTLSDESI CSNRRGSSFSG SSRSSVLDQA LPNDILFSTT PPYHSTLPPR AHPAPSMGSL RNEFWFSDGS LSDKSKCADP GLMPLPDTAT GLDWTHLVDA ARAFEDQRVA SFCTLTDMQH GQDLEGAQEL PLCVDPGSGK EFMDDTTGERS PSPLTGKVNQ LELILRQLQT DLRKEKQDKA VLQAEVQHLLR QDNMRLQEES QTATAQLRKF TEWFFTTIDK KS
Characteristics:	Human SIPA1L2 full-length ORF (AAH13119.1, 1 a.a. - 532 a.a.) recombinant protein with GST-tag at N-terminal.

Product Details

Purification: in vitro wheat germ expression system

Target Details

Target: SIPA1L2

Alternative Name: SIPA1L2 ([SIPA1L2 Products](#))

Background: Full Gene Name: signal-induced proliferation-associated 1 like 2
Synonyms: FLJ23126,FLJ23632,KIAA1389,SPAL2

Gene ID: 57568

Application Details

Application Notes: Optimal working dilution should be determined by the investigator.

Comment: Preparation method: in vitro, wheat germ expression system
Product Quality tested by: 12.5% SDS-PAGE Stained with Coomassie Blue.

Restrictions: For Research Use only

Handling

Buffer: 50 mM Tris-HCl, 10 mM reduced Glutathione, pH =8.0 in the elution buffer.

Handling Advice: Aliquot to avoid repeated freezing and thawing.

Storage: -80 °C

Storage Comment: Best use within three months from the date of receipt of this protein.

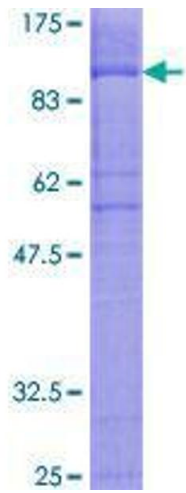


Image 1.