



[Go to Product page](#)

Datasheet for ABIN1320041  
**SIRT2 Protein (AA 1-352) (GST tag)**

**1** Image

Overview

Quantity:	10 µg
Target:	SIRT2
Protein Characteristics:	AA 1-352
Origin:	Human
Source:	Wheat germ
Protein Type:	Recombinant
Purification tag / Conjugate:	This SIRT2 protein is labelled with GST tag.
Application:	Western Blotting (WB), ELISA, Affinity Purification (AP), Antibody Array (AA)

Product Details

Purpose:	SIRT2 (Human) Recombinant Protein (P01)
Sequence:	MDFLRNLF SQ TSLG SQKER LLELTLEGV ARYMQSERCR RVICLVGAGI STSAGIPDFR SPSTGLYDNL EKYHLPYPEA IFEISYFKKH PEPFFALAKE LYPGQFKPTI CHYFMRLKLD KGLLLRCYTQ NIDTLER IAG LEQEDLVEAH GTFYTSHCVS ASCRHEYPLS WMKEKIFSEV TPKCEDCQSL VKPDIVFFGE SLPARFFSCM QSDFLKVDLL LVMGTSLQVQ PFASLISKAP LSTPRLINK EKAGQSDPFL GMIMGLGGGM DFDSKKAYRD VAWLGECDQG CLALAE LLGW KKELEDLVRR EHASIDAQSG AGVNPSTSA SPKKSPPAK DEARTTEREK PQ
Characteristics:	Human SIRT2 full-length ORF ( NP_085096.1, 1 a.a. - 352 a.a.) recombinant protein with GST-tag at N-terminal.
Purification:	in vitro wheat germ expression system

## Target Details

Target:	SIRT2
Alternative Name:	SIRT2 ( <a href="#">SIRT2 Products</a> )
Background:	Full Gene Name: sirtuin (silent mating type information regulation 2 homolog) 2 ( <i>S. cerevisiae</i> ) Synonyms: SIR2,SIR2L,SIR2L2
Gene ID:	22933
NCBI Accession:	<a href="#">NM_030593</a>

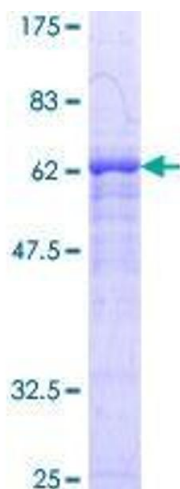
## Application Details

Application Notes:	Optimal working dilution should be determined by the investigator.
Comment:	Preparation method: in vitro, wheat germ expression system Product Quality tested by: 12.5% SDS-PAGE Stained with Coomassie Blue.
Restrictions:	For Research Use only

## Handling

Buffer:	50 mM Tris-HCl, 10 mM reduced Glutathione, pH =8.0 in the elution buffer.
Handling Advice:	Aliquot to avoid repeated freezing and thawing.
Storage:	-80 °C
Storage Comment:	Best use within three months from the date of receipt of this protein.

## Images



**Image 1.**