



[Go to Product page](#)

Datasheet for ABIN1320048

## SIRT4 Protein (AA 1-314) (GST tag)

### 1 Image

#### Overview

Quantity:	25 µg
Target:	SIRT4
Protein Characteristics:	AA 1-314
Origin:	Human
Source:	Wheat germ
Protein Type:	Recombinant
Purification tag / Conjugate:	This SIRT4 protein is labelled with GST tag.
Application:	Western Blotting (WB), ELISA, Affinity Purification (AP), Antibody Array (AA)

#### Product Details

Purpose:	SIRT4 (Human) Recombinant Protein (P01)
Sequence:	MKMSFALTFR SAKGRWIANP SQPCSKASIG LFVPASPPLD PEKVKELQRF ITLSKRLLM TGAGISTESG IPDYRSEKVG LYARTDRRPI QHGDFVRSAP IRQRYWARNF VGWPQFSSHQ PNPAHWALST WEKLGKLYWL VTQNVDAHHT KAGSRRLTEL HGCMDRVLCL DCGEQTPRGV LQERFQVLNP TWSAEAHGLA PDGDVFLSEE QVRSFQVPTC VQCGGHLKPD VFFGDTVNP DKVDFVHKRV KEADSLVVG SSLQVYSGYR FILTAWEKKL PIAILNIGPT RSDDLACLK NSRCGELLPL IDPC
Characteristics:	Human SIRT4 full-length ORF ( NP_036372.1, 1 a.a. - 314 a.a.) recombinant protein with GST-tag at N-terminal.
Purification:	in vitro wheat germ expression system

## Target Details

Target:	SIRT4
Alternative Name:	SIRT4 ( <a href="#">SIRT4 Products</a> )
Background:	Full Gene Name: sirtuin (silent mating type information regulation 2 homolog) 4 ( <i>S. cerevisiae</i> ) Synonyms: MGC130046,MGC130047,MGC57437,SIR2L4
Gene ID:	23409
NCBI Accession:	<a href="#">NM_012240</a>
Pathways:	<a href="#">Negative Regulation of Hormone Secretion</a>

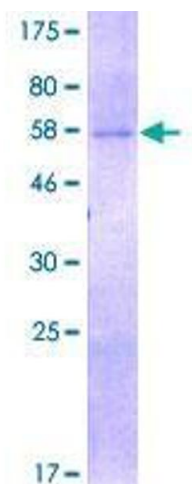
## Application Details

Application Notes:	Optimal working dilution should be determined by the investigator.
Comment:	Preparation method: in vitro, wheat germ expression system Product Quality tested by: 12.5% SDS-PAGE Stained with Coomassie Blue.
Restrictions:	For Research Use only

## Handling

Buffer:	50 mM Tris-HCl, 10 mM reduced Glutathione, pH =8.0 in the elution buffer.
Handling Advice:	Aliquot to avoid repeated freezing and thawing.
Storage:	-80 °C
Storage Comment:	Best use within three months from the date of receipt of this protein.

## Images



**Image 1.**