

Datasheet for ABIN1320070
SKAP1 Protein (GST tag)



[Go to Product page](#)

1 Image

Overview

Quantity:	10 µg
Target:	SKAP1
Origin:	Human
Source:	Wheat germ
Protein Type:	Recombinant
Purification tag / Conjugate:	This SKAP1 protein is labelled with GST tag.
Application:	Western Blotting (WB), ELISA, Affinity Purification (AP), Antibody Array (AA)

Product Details

Purpose:	SCAP1 (Human) Recombinant Protein (P01)
Sequence:	<p>MQAAALPEEI RWLLEDAEEF LAEGLRNENL SAVARDHRDH ILRGFQSIKA RYYWDFQPQG GDIGQDSSDD NHSGTLGLSL TSDAPFLSDY QDEGMEDIVK GAQELDNVIK QGYLEKKS HSFFGSEWQK RWCVVSRLG FYYYANEKSKQ PKGTFLIKGY GVRMAPHLRR DSKKESCFEL TSQDRRSYEF TATSPAARD WVDQISFLK DLSSLTIPYE EEEEEEEKEE TYDDIDGFDS PSCGSQCRPT ILPGSVGIKE PTEEKEEDI YEVLDPDEEHD LEEDESGTRR KGDYASYQ LWDCHGDQPD ELSFQRGDLI RILSKEYNMY GWWVGELNSL VGIVPKEYLT TAFEVEER</p>
Characteristics:	Human SCAP1 full-length ORF (AAH47870, 1 a.a. - 358 a.a.) recombinant protein with GST-tag at N-terminal.
Purification:	in vitro wheat germ expression system

Target Details

Target:	SKAP1
Alternative Name:	SKAP1 (SKAP1 Products)
Background:	Gene: src kinase associated phosphoprotein 1 Synonyms: SCAP1, SKAP55
Gene ID:	8631

Application Details

Application Notes:	Optimal working dilution should be determined by the investigator.
Restrictions:	For Research Use only

Handling

Buffer:	50 mM Tris-HCl, 10 mM reduced Glutathione, pH =8.0 in the elution buffer.
Handling Advice:	Aliquot to avoid repeated freezing and thawing.
Storage:	-80 °C
Storage Comment:	Best use within three months from the date of receipt of this protein.

Images

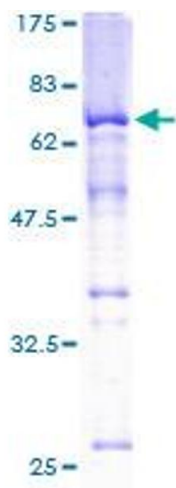


Image 1.