



Datasheet for ABIN1320074
SKAP2 Protein (AA 1-359) (GST tag)



[Go to Product page](#)

1 Image

Overview

Quantity:	10 µg
Target:	SKAP2
Protein Characteristics:	AA 1-359
Origin:	Human
Source:	Wheat germ
Protein Type:	Recombinant
Purification tag / Conjugate:	This SKAP2 protein is labelled with GST tag.
Application:	ELISA, Western Blotting (WB), Affinity Purification (AP), Antibody Array (AA)

Product Details

Purpose:	SCAP2 (Human) Recombinant Protein (P01)
Sequence:	MPNPSSTSSP YLPPEEIRNL LADVETFVAD ILKGENLSKK AKEKRESLIK KIKDVKSIYL QEFQDKGDAE DGEEYDDPFA GPPDTISLAS ERYDKDDEAP SDGAQFPPIA AQDLPFVLKA GYLEKRRKDH SFLGFQWQKR WCALSKTVFY YYGSDKDKQQ KGEFAIDGYS VRMNNTLRKD GKKDCCFEIS APDKRIYQFT AASPKDAEEW VQQLKFLVDQ MESDIIPEDY DERGELYDDV DHPLPISNPL TSSQPIDDEI YEELPEEEED SAPVKVEEQR KMSQDSVHHT SGDKSTDYAN FYQGLWDCTG AFSDELSEFKR GDVIYILSKE YNRYGWWVGE MKGAIGLVPK AYIMEMYDI
Characteristics:	Human SCAP2 full-length ORF (AAH02893, 1 a.a. - 359 a.a.) recombinant protein with GST-tag at N-terminal.
Purification:	in vitro wheat germ expression system

Target Details

Target:	SKAP2
Alternative Name:	SKAP2 (SKAP2 Products)
Background:	Full Gene Name: src kinase associated phosphoprotein 2 Synonyms: MGC10411,MGC33304,PRAP,RA70,SAPS,SCAP2,SKAP-HOM,SKAP55R
Gene ID:	8935

Application Details

Application Notes:	Optimal working dilution should be determined by the investigator.
Comment:	Preparation method: in vitro, wheat germ expression system Product Quality tested by: 12.5% SDS-PAGE Stained with Coomassie Blue.
Restrictions:	For Research Use only

Handling

Buffer:	50 mM Tris-HCl, 10 mM reduced Glutathione, pH =8.0 in the elution buffer.
Handling Advice:	Aliquot to avoid repeated freezing and thawing.
Storage:	-80 °C
Storage Comment:	Best use within three months from the date of receipt of this protein.

Images

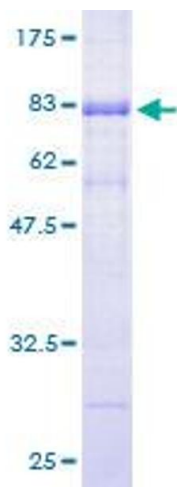


Image 1.