



[Go to Product page](#)

Datasheet for ABIN1320085

SKIV2L Protein (AA 1125-1233) (GST tag)

1 Image

Overview

Quantity:	10 µg
Target:	SKIV2L
Protein Characteristics:	AA 1125-1233
Origin:	Human
Source:	Wheat germ
Protein Type:	Recombinant
Purification tag / Conjugate:	This SKIV2L protein is labelled with GST tag.
Application:	ELISA, Western Blotting (WB), Affinity Purification (AP), Antibody Array (AA)

Product Details

Purpose:	SKIV2L (Human) Recombinant Protein (Q01)
Sequence:	DQLPNTLKQG IERVRAVAKR IGEVQVACGL NQTVVEEFVGE LNFGLVEVVY EWARGMPFSE LAGLSGTPEG LVVRCIQRLA EMCRSLRGAA RLVGEPVLGA KMETAATLL
Characteristics:	Human SKIV2L partial ORF (NP_008860, 1125 a.a. - 1233 a.a.) recombinant protein with GST-tag at N-terminal.
Purification:	in vitro wheat germ expression system

Target Details

Target:	SKIV2L
Alternative Name:	SKIV2L (SKIV2L Products)

Target Details

Background:	Full Gene Name: superkiller viralicidic activity 2-like (<i>S. cerevisiae</i>) Synonyms: 170A,DDX13,HLP,SKI2,SKI2W,SKIV2
Gene ID:	6499
NCBI Accession:	NM_006929

Application Details

Application Notes:	Optimal working dilution should be determined by the investigator.
Comment:	Preparation method: in vitro, wheat germ expression system Product Quality tested by: 12.5% SDS-PAGE Stained with Coomassie Blue.
Restrictions:	For Research Use only

Handling

Buffer:	50 mM Tris-HCl, 10 mM reduced Glutathione, pH =8.0 in the elution buffer.
Handling Advice:	Aliquot to avoid repeated freezing and thawing.
Storage:	-80 °C
Storage Comment:	Best use within three months from the date of receipt of this protein.

Images

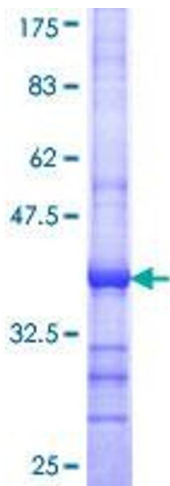


Image 1.