

Datasheet for ABIN1320089
SKP1 Protein (AA 53-160) (GST tag)



[Go to Product page](#)

1 Image

Overview

Quantity:	10 µg
Target:	SKP1
Protein Characteristics:	AA 53-160
Origin:	Human
Source:	Wheat germ
Protein Type:	Recombinant
Purification tag / Conjugate:	This SKP1 protein is labelled with GST tag.
Application:	ELISA, Western Blotting (WB), Affinity Purification (AP), Antibody Array (AA)

Product Details

Purpose:	SKP1A (Human) Recombinant Protein (Q01)
Sequence:	AILKKVIQWC THHKDDPPPP EDDENKEKRT DDIPVWDQEF LKVDQGTLE LILAANYLDI KGLLDVTCKT VANMIK GKTP EEIRKTFNIK NDFTEEEEAQ VGSTQFCL
Characteristics:	Human SKP1A partial ORF (NP_008861, 53 a.a. - 160 a.a.) recombinant protein with GST-tag at N-terminal.
Purification:	in vitro wheat germ expression system

Target Details

Target:	SKP1
Alternative Name:	SKP1 (SKP1 Products)

Target Details

Background:	Full Gene Name: S-phase kinase-associated protein 1 Synonyms: EMC19,MGC34403,OCP-II,OCP2,SKP1A,TCEB1L,p19A
Gene ID:	6500
NCBI Accession:	NM_006930
Pathways:	Cell Division Cycle , Hedgehog Signaling , Mitotic G1-G1/S Phases

Application Details

Application Notes:	Optimal working dilution should be determined by the investigator.
Comment:	Preparation method: in vitro, wheat germ expression system Product Quality tested by: 12.5% SDS-PAGE Stained with Coomassie Blue.
Restrictions:	For Research Use only

Handling

Buffer:	50 mM Tris-HCl, 10 mM reduced Glutathione, pH =8.0 in the elution buffer.
Handling Advice:	Aliquot to avoid repeated freezing and thawing.
Storage:	-80 °C
Storage Comment:	Best use within three months from the date of receipt of this protein.

Images

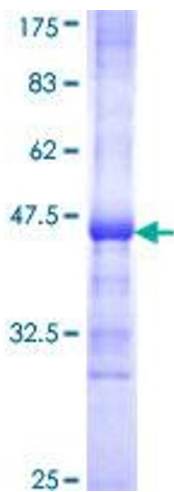


Image 1.