



Datasheet for ABIN1320114
SLC10A4 Protein (AA 1-437) (GST tag)



[Go to Product page](#)

1 Image

Overview

Quantity:	10 µg
Target:	SLC10A4
Protein Characteristics:	AA 1-437
Origin:	Human
Source:	Wheat germ
Protein Type:	Recombinant
Purification tag / Conjugate:	This SLC10A4 protein is labelled with GST tag.
Application:	ELISA, Western Blotting (WB), Affinity Purification (AP), Antibody Array (AA)

Product Details

Purpose:	SLC10A4 (Human) Recombinant Protein (P01)
Sequence:	MDGNDNVTLT FAPLLRDNYT LAPNASSLGP GTDLALAPAS SAGPGPGLSL GPGPSFGFSP GPTPTPEPTT SGLAGGAASH GPSPFPRPWA PHALPFWDTP LNHGLNVFVG AALCITMLGL GCTVDVNHFG AHVRRPVGAL LAALCQFGLL PLLAFLLALA FKLDEVAAVA VLLCGCCPGG NLSNLMSELLV DGD MNLSIIM TISSTLLALV LMPLCLWIYS WAWINTPIVQ LLPLGTVTLT LCSTLIPIGL GVFIKYKYSR VADYIVKVSL WLLVTLVVL FIMTGTMLGP ELLASIPAAV YVIAIFMPLA GYASGYGLAT LFHLPPNCKR TVCLETGSQN VQLCTAILKL AFPPQFIGSM YMFPLLYALF QSAEAGIFVL IYKMYGSEML HKRDPLDEDE DTDISYKCLK EEEMADTSYG TVKAENIIMM ETAQTSL
Characteristics:	Human SLC10A4 full-length ORF (NP_689892.1, 1 a.a. - 437 a.a.) recombinant protein with GST-tag at N-terminal.

Product Details

Purification: in vitro wheat germ expression system

Target Details

Target: SLC10A4

Alternative Name: SLC10A4 ([SLC10A4 Products](#))

Background: Full Gene Name: solute carrier family 10 (sodium/bile acid cotransporter family), member 4
Synonyms: MGC29802,P4

Gene ID: 201780

NCBI Accession: [NM_152679](#)

Application Details

Application Notes: Optimal working dilution should be determined by the investigator.

Comment: Preparation method: in vitro, wheat germ expression system
Product Quality tested by: 12.5% SDS-PAGE Stained with Coomassie Blue.

Restrictions: For Research Use only

Handling

Buffer: 50 mM Tris-HCl, 10 mM reduced Glutathione, pH =8.0 in the elution buffer.

Handling Advice: Aliquot to avoid repeated freezing and thawing.

Storage: -80 °C

Storage Comment: Best use within three months from the date of receipt of this protein.

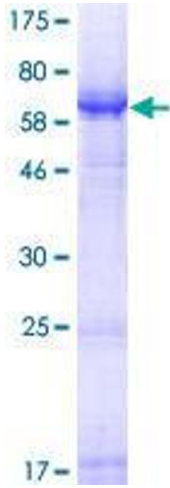


Image 1.