



[Go to Product page](#)

Datasheet for ABIN1320116

## SLC10A6 Protein (AA 1-377) (GST tag)

### 1 Image

#### Overview

Quantity:	25 µg
Target:	SLC10A6
Protein Characteristics:	AA 1-377
Origin:	Human
Source:	Wheat germ
Protein Type:	Recombinant
Purification tag / Conjugate:	This SLC10A6 protein is labelled with GST tag.
Application:	ELISA, Western Blotting (WB), Affinity Purification (AP), Antibody Array (AA)

#### Product Details

Purpose:	SLC10A6 (Human) Recombinant Protein (P01)
Sequence:	MRANCSSSSA CPANSSEEEL PVGLEVHGNL ELVFTVVSTV MMGLLMFSLG CSVEIRKLWS HIRRPWGIAV GLLCQFGLMP FTAYLLAISF SLKPVQAIIV LIMGCCPGGT ISNIFTFWVD GDMDLSISMT TCSTVAALGM MPLCIYLYTW SWSLQQNLTI PYQNIQITLV CLTIPVAFGV YVNYRWPKQS KIILKIGAVV GGVLLLVAV AGVVLAKGSW NSDITLLTIS FIFPLIGHVT GFLALFTHQ SWQRCRTISL ETGAQNIQMC ITMLQLSFTA EHLVQMLSFP LAYGLFQLID GFLIVAAYQT YKRRLKNKHG KKNSGCTEVC HTRKSTSSRE TNAFLEVNEE GAITPGPPGP MDCHRALEPV GHITSCE
Characteristics:	Human SLC10A6 full-length ORF ( NP_932069.1, 1 a.a. - 377 a.a.) recombinant protein with GST-tag at N-terminal.
Purification:	in vitro wheat germ expression system

## Target Details

Target:	SLC10A6
Alternative Name:	SLC10A6 ( <a href="#">SLC10A6 Products</a> )
Background:	Full Gene Name: solute carrier family 10 (sodium/bile acid cotransporter family), member 6 Synonyms: MGC129575,MGC129576,SOAT
Gene ID:	345274
NCBI Accession:	<a href="#">NM_197965</a>

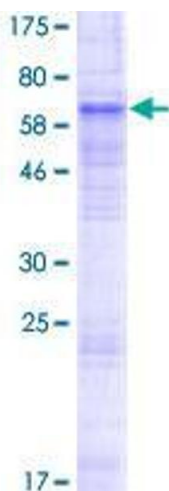
## Application Details

Application Notes:	Optimal working dilution should be determined by the investigator.
Comment:	Preparation method: in vitro, wheat germ expression system Product Quality tested by: 12.5% SDS-PAGE Stained with Coomassie Blue.
Restrictions:	For Research Use only

## Handling

Buffer:	50 mM Tris-HCl, 10 mM reduced Glutathione, pH =8.0 in the elution buffer.
Handling Advice:	Aliquot to avoid repeated freezing and thawing.
Storage:	-80 °C
Storage Comment:	Best use within three months from the date of receipt of this protein.

## Images



**Image 1.**