

Datasheet for ABIN1320148
SLC15A3 Protein (AA 1-581) (GST tag)



[Go to Product page](#)

1 Image

Overview

Quantity:	25 µg
Target:	SLC15A3
Protein Characteristics:	AA 1-581
Origin:	Human
Source:	Wheat germ
Protein Type:	Recombinant
Purification tag / Conjugate:	This SLC15A3 protein is labelled with GST tag.
Application:	ELISA, Western Blotting (WB), Affinity Purification (AP), Antibody Array (AA)

Product Details

Purpose:	SLC15A3 (Human) Recombinant Protein (P01)
Sequence:	MPAPRAREQP RVPGERQPLL PRGARGPRRW RRAAGAAVLL VEMLERAAFF GVTANLVLYL NSTNFNWTGE QATRAALVFL GASYLLAPVG GWLADVYLGR YRAVALSLLL YLAASGLLPA TAFPDGRSSF CGEMPASPLG PACPSAGCPR SSPSPYCAPV LYAGLLLLGL AASSVRSNLT SFGADQVMDL GRDATRRFFN WFYWSINLGA VLSLLVAFI QQNISFLLGY SIPVGCVGLA FFIFLFATPV FITKPPMGSQ VSSMLKLALQ NCCPQLWQRH SARDRQCARV LADERSPPQG ASPQEDIANF QVLVKILPVM VTLVPYWMVY FQMQRSTYVLQ GLHLHIPNFF PANPANISVA LRAQGSSYTI PEAWLLLANV VVVLILVPLK DRLIDPLLLR CKLLPSALQK MALGMFFGFT SVIVAGVLEM ERLHYIHHNE TVSQQIGEV L YNAAPLSIWW QIPQYLLIGI SEIFASIPGL EFAYSEAPRS MQGAIMGIFF CLSGVGSLLG SSLVALLSLP GGWLHCPKDF GNINNCRMDL YFFLLAGIQA VTALLFWWIA GRYERASQGP ASHSRFSRDR G
Characteristics:	Human SLC15A3 full-length ORF (AAH37974.1, 1 a.a. - 581 a.a.) recombinant protein with GST-

Product Details

tag at N-terminal.

Purification: in vitro wheat germ expression system

Target Details

Target: SLC15A3

Alternative Name: SLC15A3 ([SLC15A3 Products](#))

Background: Full Gene Name: solute carrier family 15, member 3
Synonyms: FLJ26631,OCTP,PHT2,PTR3,hPTR3

Gene ID: 51296

Application Details

Application Notes: Optimal working dilution should be determined by the investigator.

Comment: Preparation method: in vitro, wheat germ expression system
Product Quality tested by: 12.5% SDS-PAGE Stained with Coomassie Blue.

Restrictions: For Research Use only

Handling

Buffer: 50 mM Tris-HCl, 10 mM reduced Glutathione, pH =8.0 in the elution buffer.

Handling Advice: Aliquot to avoid repeated freezing and thawing.

Storage: -80 °C

Storage Comment: Best use within three months from the date of receipt of this protein.

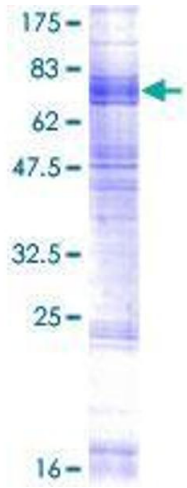


Image 1.