



[Go to Product page](#)

Datasheet for ABIN1320149

SLC15A3 Protein (AA 254-311) (GST tag)

1 Image

Overview

Quantity:	10 µg
Target:	SLC15A3
Protein Characteristics:	AA 254-311
Origin:	Human
Source:	Wheat germ
Protein Type:	Recombinant
Purification tag / Conjugate:	This SLC15A3 protein is labelled with GST tag.
Application:	ELISA, Western Blotting (WB), Affinity Purification (AP), Antibody Array (AA)

Product Details

Purpose:	SLC15A3 (Human) Recombinant Protein (Q01)
Sequence:	KPPMGSQVSS MLKLALQNCC PQLWQRHSAR DRQCARVLAD ERSPQPGASP QEDIANFQ
Characteristics:	Human SLC15A3 partial ORF (NP_057666.1, 254 a.a. - 311 a.a.) recombinant protein with GST-tag at N-terminal.
Purification:	in vitro wheat germ expression system

Target Details

Target:	SLC15A3
Alternative Name:	SLC15A3 (SLC15A3 Products)
Background:	Full Gene Name: solute carrier family 15, member 3

Target Details

Synonyms: FLJ26631,OCTP,PHT2,PTR3,hPTR3

Gene ID: 51296

NCBI Accession: [NM_016582](#)

Application Details

Application Notes: Optimal working dilution should be determined by the investigator.

Comment: Preparation method: in vitro, wheat germ expression system
Product Quality tested by: 12.5% SDS-PAGE Stained with Coomassie Blue.

Restrictions: For Research Use only

Handling

Buffer: 50 mM Tris-HCl, 10 mM reduced Glutathione, pH =8.0 in the elution buffer.

Handling Advice: Aliquot to avoid repeated freezing and thawing.

Storage: -80 °C

Storage Comment: Best use within three months from the date of receipt of this protein.

Images

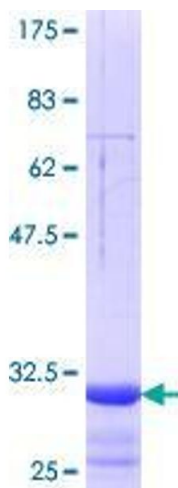


Image 1.