

Datasheet for ABIN1320152  
**SLC17A3 Protein (AA 1-420) (GST tag)**



[Go to Product page](#)

1 Image

Overview

Quantity:	10 µg
Target:	SLC17A3
Protein Characteristics:	AA 1-420
Origin:	Human
Source:	Wheat germ
Protein Type:	Recombinant
Purification tag / Conjugate:	This SLC17A3 protein is labelled with GST tag.
Application:	ELISA, Western Blotting (WB), Affinity Purification (AP), Antibody Array (AA)

Product Details

Purpose:	SLC17A3 (Human) Recombinant Protein (P01)
Sequence:	<p>MATKTELSPT ARESKNAQDM QVDETLIPRK VPSLCSARYG IALVLHFCNF TTIAQNVIMN                      ITMVAMVNST SPQSQLNDSS EVLPVDSFEGG LSKAPKSLPT KSSILGGQFA IWEKWGPPQE                      RSRLCSIALS GMLLGCFTAI LIGGFISLTL GWPFVFIYIFG GVGVCVCLLW FVVIYDDPVS                      YPWISTSEKE YIISSLKQQV GSSKQPLPIK AMLRSLPIWS ICLGCFSHQW LVSTMVVYIP                      TYISSVYHVN IRDNGLLSAL PFIVAVVIGM VGGYLADFLF TKKFRLLITVR KIATILGSLP                      SSALIVSLPY LNSGYITATA LLTLSCGLST LCQSGIYINV LDIAPRYSSF LMGASRGFSS                      IAPVIVPTVS GFLLSQDPEF GWRNVFFLLF AVNLLGLLFY LIFGEADVQE WAKERKLTRL</p>
Characteristics:	Human SLC17A3 full-length ORF ( AAH17952.1, 1 a.a. - 420 a.a.) recombinant protein with GST-tag at N-terminal.
Purification:	in vitro wheat germ expression system

## Target Details

Target:	SLC17A3
Alternative Name:	SLC17A3 ( <a href="#">SLC17A3 Products</a> )
Background:	Full Gene Name: solute carrier family 17 (sodium phosphate), member 3 Synonyms: NPT4
Gene ID:	10786

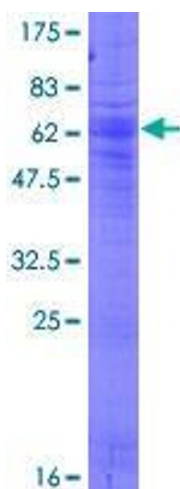
## Application Details

Application Notes:	Optimal working dilution should be determined by the investigator.
Comment:	Preparation method: in vitro, wheat germ expression system Product Quality tested by: 12.5% SDS-PAGE Stained with Coomassie Blue.
Restrictions:	For Research Use only

## Handling

Buffer:	50 mM Tris-HCl, 10 mM reduced Glutathione, pH =8.0 in the elution buffer.
Handling Advice:	Aliquot to avoid repeated freezing and thawing.
Storage:	-80 °C
Storage Comment:	Best use within three months from the date of receipt of this protein.

## Images



**Image 1.**