



[Go to Product page](#)

Datasheet for ABIN1320157
SLC17A7 Protein (AA 1-560) (GST tag)

1 Image

Overview

Quantity:	2 µg
Target:	SLC17A7
Protein Characteristics:	AA 1-560
Origin:	Human
Source:	Wheat germ
Protein Type:	Recombinant
Purification tag / Conjugate:	This SLC17A7 protein is labelled with GST tag.
Application:	Western Blotting (WB), ELISA, Affinity Purification (AP), Antibody Array (AA)

Product Details

Purpose:	SLC17A7 (Human) Recombinant Protein (P01)
Sequence:	MEFRQEEFRK LAGRALGKLH RLLLEKRQEGA ETLLELSADGR PVTQTTRDPP VVDCTCFGLP RRYIIAIMSG LGFCISFGIR CNLGVAIVSM VNNSTTHRGG HVVVQKAQFS WDPETVGLIH GSFFWGYIVT QIPGGFICQK FAANRVFGFA IVATSTLNML IPSAARVHYG CVIFVRILQG LVEGVTYTYPAC HGIWSKWAPP LERSRLATTA FCGSYAGAVV AMPLAGVLVQ YSGWSSVFYV YGSFGIFWYL FWLLVSYESP ALHPSISEEE RKYIEDAIGE SAKLMNPLTK FSTPWRRFFT SMPVYAIIVA NFCRSWTFYL LLISQPAYFE EVFGFEISKV GLVSALPHLV MTIIVPIGGQ IADFLRSRRI MSTTNVRKLM NCGGFGMEAT LLLVVGYSHS KGVAISFLVL AVGFSGFAIS GFNVNHLDIA RRYASILMGI SNGVGTLSGM VCPPIVGAMT KHKTREEWQY VFLIASLVHY GGVIFYGVFA SGEKQPWAEP EEMSEEKCGF VGHDQLAGSD DSEMEDEAEP PGAPPAPPPS YGATHSTFQP PRPPPPVRDY
Characteristics:	Human SLC17A7 full-length ORF (AAH59379.1, 1 a.a. - 560 a.a.) recombinant protein with GST-

Product Details

tag at N-terminal.

Purification: in vitro wheat germ expression system

Target Details

Target: SLC17A7

Alternative Name: SLC17A7 ([SLC17A7 Products](#))

Background: Full Gene Name: solute carrier family 17 (sodium-dependent inorganic phosphate cotransporter), member 7
Synonyms: BNPI,VGLUT1

Gene ID: 57030

Application Details

Application Notes: Optimal working dilution should be determined by the investigator.

Comment: Preparation method: in vitro, wheat germ expression system
Product Quality tested by: 12.5% SDS-PAGE Stained with Coomassie Blue.

Restrictions: For Research Use only

Handling

Buffer: 50 mM Tris-HCl, 10 mM reduced Glutathione, pH =8.0 in the elution buffer.

Handling Advice: Aliquot to avoid repeated freezing and thawing.

Storage: -80 °C

Storage Comment: Best use within three months from the date of receipt of this protein.

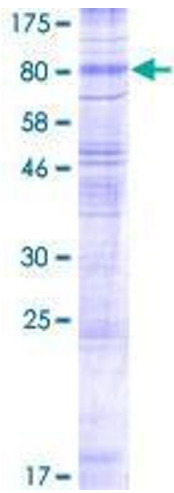


Image 1.