



Datasheet for ABIN1320158

SLC18A1 Protein (AA 1-493) (GST tag)



[Go to Product page](#)

1 Image

Overview

Quantity:	10 µg
Target:	SLC18A1
Protein Characteristics:	AA 1-493
Origin:	Human
Source:	Wheat germ
Protein Type:	Recombinant
Purification tag / Conjugate:	This SLC18A1 protein is labelled with GST tag.
Application:	ELISA, Western Blotting (WB), Affinity Purification (AP), Antibody Array (AA)

Product Details

Purpose:	SLC18A1 (Human) Recombinant Protein (P01)
Sequence:	MLRPILDAPQ RLLKEGRASR QLVLVVVFA LLLDNMLFTV VVPIVPTFLY DMEFKEVNSS LHLGHAGSSP HALASPAFST IFSFFNNNTV AVEESVPSGI AWMNDTASTI PPPATEAISA HKNNCLQGTG FLEEETTRVG VLFASKAVMQ LLVNPFGVPL TNRIGYHIPM FAGFVIMFLS TVMFAFSGTY TLLFVARTLQ GIGSSFSSVA GLGMLASVYT DDHERGRAMG TALGGLALGL LVGAPFGSVM YEFVGKSAPF LILAFLLLD GALQLCILQP SKVSPESAKG TPLFMLLKDP YILVAAGLAF LPASVSYLIG TNLFGVLANK MGRWLCSLIG MLVVGTSLLC VPLAHNIFGL IGPNAGLGLA IGMVDSSMMP IMGHLVDLRH TSVYGSVYAI ADVAFCMGFA IGPSTGGAIV KAIGFPWLMV ITGVINIVYA PLCYYLRSP AKEEKLAILS QDCPMETRM MY ATQKPTKEFP LGEDSDEE PD HEE
Characteristics:	Human SLC18A1 full-length ORF (AAH06317.1, 1 a.a. - 493 a.a.) recombinant protein with GST-tag at N-terminal.

Product Details

Purification: in vitro wheat germ expression system

Target Details

Target: SLC18A1

Alternative Name: SLC18A1 ([SLC18A1 Products](#))

Background: Full Gene Name: solute carrier family 18 (vesicular monoamine), member 1
Synonyms: CGAT,VAT1,VMAT1

Gene ID: 6570

Application Details

Application Notes: Optimal working dilution should be determined by the investigator.

Comment: Preparation method: in vitro, wheat germ expression system
Product Quality tested by: 12.5% SDS-PAGE Stained with Coomassie Blue.

Restrictions: For Research Use only

Handling

Buffer: 50 mM Tris-HCl, 10 mM reduced Glutathione, pH =8.0 in the elution buffer.

Handling Advice: Aliquot to avoid repeated freezing and thawing.

Storage: -80 °C

Storage Comment: Best use within three months from the date of receipt of this protein.

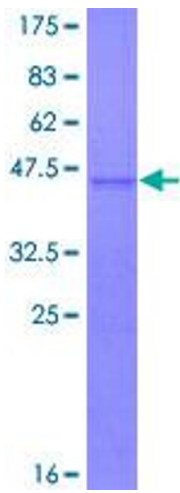


Image 1.