

Datasheet for ABIN1320164
SLC19A1 Protein (AA 1-489) (GST tag)



[Go to Product page](#)

1 Image

Overview

Quantity:	25 µg
Target:	SLC19A1
Protein Characteristics:	AA 1-489
Origin:	Human
Source:	Wheat germ
Protein Type:	Recombinant
Purification tag / Conjugate:	This SLC19A1 protein is labelled with GST tag.
Application:	ELISA, Western Blotting (WB), Affinity Purification (AP), Antibody Array (AA)

Product Details

Purpose:	SLC19A1 (Human) Recombinant Protein (P01)
Sequence:	MVPSSPAVEK QVPVEPGDP ELRSWRLVC YLCFYGFMAQ IRPGESFITP YLLGPDKNFT REQVTNEITP VLSYSYLA VL VPVFLLDYL RYTPVLLLQG LSFVSVWLLL LLGH SVAHMQ LMELFYSVTM AARIAYSSYI FSLVRPARYQ RVAGYSRAAV LLGVFTSSVL GQLLVTVGRV SFSTLNYISL AFLTFSVLA LFLKRPKRSL FFNRDDRGRG ETSASELERM NPGPGGKLGH ALRVACGDSV LARMLRELGD SLRRPQLRLW SLWWWFNSAG YYLVVYYVHI LWNEVDPTTN SARVYNGAAD AASTLLGAIT SFAAGFVKIR WARWSKLLIA GVTATQAGLV FLLAHRHPS SIWLCYAAFV LFRGSYQFLV PIATFQIASS LSKELCALVF GVNTFFATIV KTIITFIVSD VRGLGLPVRK QNEELHVASL SLWKSHLRLA ADTLSSEGSS GSGPRSWFLS PTLRAALHGP VCPSEVCPS
Characteristics:	Human SLC19A1 full-length ORF (AAH03068.1, 1 a.a. - 489 a.a.) recombinant protein with GST-tag at N-terminal.

Product Details

Purification: in vitro wheat germ expression system

Target Details

Target: SLC19A1

Alternative Name: SLC19A1 ([SLC19A1 Products](#))

Background: Full Gene Name: solute carrier family 19 (folate transporter), member 1
Synonyms: CHMD,FOLT,IFC1,REFC,RFC1

Gene ID: 6573

Pathways: [Dicarboxylic Acid Transport](#)

Application Details

Application Notes: Optimal working dilution should be determined by the investigator.

Comment: Preparation method: in vitro, wheat germ expression system
Product Quality tested by: 12.5% SDS-PAGE Stained with Coomassie Blue.

Restrictions: For Research Use only

Handling

Buffer: 50 mM Tris-HCl, 10 mM reduced Glutathione, pH =8.0 in the elution buffer.

Handling Advice: Aliquot to avoid repeated freezing and thawing.

Storage: -80 °C

Storage Comment: Best use within three months from the date of receipt of this protein.

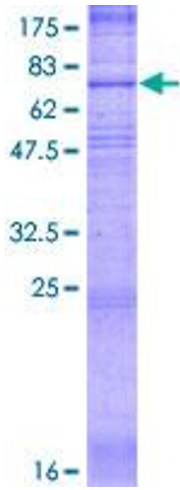


Image 1.