



[Go to Product page](#)

Datasheet for ABIN1320176

SLC1A3 Protein (AA 1-542) (GST tag)

1 Image

Overview

Quantity:	10 µg
Target:	SLC1A3
Protein Characteristics:	AA 1-542
Origin:	Human
Source:	Wheat germ
Protein Type:	Recombinant
Purification tag / Conjugate:	This SLC1A3 protein is labelled with GST tag.
Application:	Western Blotting (WB), ELISA, Affinity Purification (AP), Antibody Array (AA)

Product Details

Purpose:	SLC1A3 (Human) Recombinant Protein (P02)
Sequence:	MTKSNGEPEPK MGGRMERFQQ GVSKRTLLAK KKVQNITKED VKSYLFRNAF VLLTAVIV GTILGFTLRP YRMSYREVKY FSFPGELLMR MLQMLVPLI ISSLVTGMAA LDSKASGKMG MRAVVYYMTT TIIAVVIGII IVIIIHPGKG TKENMHREGK IVRVTAADAF LDLIRNMFPF NLVEACFKQF KTNYEKRSFK VPIQANETLV GAVINNVSEA METLTRITEE LVPVPGSVNG VNALGLVVFS MCFGFVIGNM KEQGQALREF FDSLNEAIMR LVAVIMWYAP VGILFLIAGK IVEMEDMGVI GGQLAMYTVT VIVGLLIHAV IVLPLLYFLV TRKNPWWFIG GLLQALITAL GTSSSSATLP ITFKCLEENN GVDKRVTRFV LPVGATINMD GTALYEALAA IFIAQVNNFE LNFGQIITIS ITATAASIGA AGIPQAGLVT MVIVLTSVGL PTDDITLIIA VDWFLDRLRT TTNVLGDSL AGIVEHLSRH ELKNRDVEMG NSVIEENEMK KPYQLIAQDN ETEKPIDSET KM
Characteristics:	Human SLC1A3 full-length ORF (NP_004163.2, 1 a.a. - 542 a.a.) recombinant protein with GST-tag at N-terminal.

Product Details

Purification: in vitro wheat germ expression system

Target Details

Target: SLC1A3

Alternative Name: SLC1A3 ([SLC1A3 Products](#))

Background: Full Gene Name: solute carrier family 1 (glial high affinity glutamate transporter), member 3
Synonyms: EA6,EAAT1,FLJ25094,GLAST,GLAST1

Gene ID: 6507

NCBI Accession: [NM_004172](#)

Pathways: [Sensory Perception of Sound](#), [Synaptic Membrane](#), [Dicarboxylic Acid Transport](#)

Application Details

Application Notes: Optimal working dilution should be determined by the investigator.

Comment: Preparation method: in vitro, wheat germ expression system
Product Quality tested by: 12.5% SDS-PAGE Stained with Coomassie Blue.

Restrictions: For Research Use only

Handling

Buffer: 50 mM Tris-HCl, 10 mM reduced Glutathione, pH =8.0 in the elution buffer.

Handling Advice: Aliquot to avoid repeated freezing and thawing.

Storage: -80 °C

Storage Comment: Best use within three months from the date of receipt of this protein.

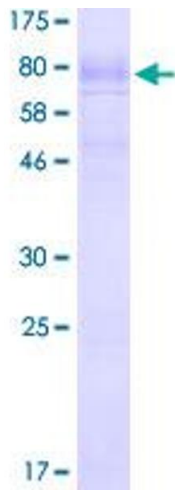


Image 1.