



[Go to Product page](#)

Datasheet for ABIN1320178

SLC1A3 Protein (AA 162-237) (GST tag)

1 Image

Overview

Quantity:	10 µg
Target:	SLC1A3
Protein Characteristics:	AA 162-237
Origin:	Human
Source:	Wheat germ
Protein Type:	Recombinant
Purification tag / Conjugate:	This SLC1A3 protein is labelled with GST tag.
Application:	Western Blotting (WB), ELISA, Affinity Purification (AP), Antibody Array (AA)

Product Details

Purpose:	SLC1A3 (Human) Recombinant Protein (Q01)
Sequence:	VRVTAADAFL DLIRNMFPPN LVEACFKQFK TNYEKRSFKV PIQANETLVG AVINNVSEAM ETLTRITEEL VPVPGS
Characteristics:	Human SLC1A3 partial ORF (NP_004163.2, 162 a.a. - 237 a.a.) recombinant protein with GST-tag at N-terminal.
Purification:	in vitro wheat germ expression system

Target Details

Target:	SLC1A3
Alternative Name:	SLC1A3 (SLC1A3 Products)

Target Details

Background:	Full Gene Name: solute carrier family 1 (glial high affinity glutamate transporter), member 3 Synonyms: EA6,EAAT1,FLJ25094,GLAST,GLAST1
Gene ID:	6507
NCBI Accession:	NM_004172
Pathways:	Sensory Perception of Sound , Synaptic Membrane , Dicarboxylic Acid Transport

Application Details

Application Notes:	Optimal working dilution should be determined by the investigator.
Comment:	Preparation method: in vitro, wheat germ expression system Product Quality tested by: 12.5% SDS-PAGE Stained with Coomassie Blue.
Restrictions:	For Research Use only

Handling

Buffer:	50 mM Tris-HCl, 10 mM reduced Glutathione, pH =8.0 in the elution buffer.
Handling Advice:	Aliquot to avoid repeated freezing and thawing.
Storage:	-80 °C
Storage Comment:	Best use within three months from the date of receipt of this protein.

Images

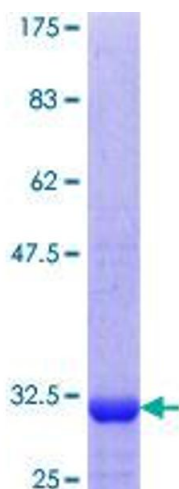


Image 1.