



[Go to Product page](#)

Datasheet for ABIN1320184

SLC1A7 Protein (AA 1-158) (GST tag)

1 Image

Overview

Quantity:	10 µg
Target:	SLC1A7
Protein Characteristics:	AA 1-158
Origin:	Human
Source:	Wheat germ
Protein Type:	Recombinant
Purification tag / Conjugate:	This SLC1A7 protein is labelled with GST tag.
Application:	Western Blotting (WB), ELISA, Affinity Purification (AP), Antibody Array (AA)

Product Details

Purpose:	SLC1A7 (Human) Recombinant Protein (P01)
Sequence:	MVPHAILARG RDVCRNGLL ILSVLSVIVG CLLGFFLRTR RLSPQEISYF QFPGELLMRM LKMMILPLVV SSLMSGSLASL DAKTSSRLGV LTVAYYLWTT FMAVIVGIFM VSIHPGSAA QKETTEQSGK PIMSSADALL DLIRQKEESW RNGPKGPG
Characteristics:	Human SLC1A7 full-length ORF (AAH00651, 1 a.a. - 158 a.a.) recombinant protein with GST-tag at N-terminal.
Purification:	in vitro wheat germ expression system

Target Details

Target:	SLC1A7
Alternative Name:	SLC1A7 (SLC1A7 Products)

Target Details

Background:	Full Gene Name: solute carrier family 1 (glutamate transporter), member 7 Synonyms: AAAT,EAAT5,FLJ36602
Gene ID:	6512
Pathways:	Dicarboxylic Acid Transport

Application Details

Application Notes:	Optimal working dilution should be determined by the investigator.
Comment:	Preparation method: in vitro, wheat germ expression system Product Quality tested by: 12.5% SDS-PAGE Stained with Coomassie Blue.
Restrictions:	For Research Use only

Handling

Buffer:	50 mM Tris-HCl, 10 mM reduced Glutathione, pH =8.0 in the elution buffer.
Handling Advice:	Aliquot to avoid repeated freezing and thawing.
Storage:	-80 °C
Storage Comment:	Best use within three months from the date of receipt of this protein.

Images

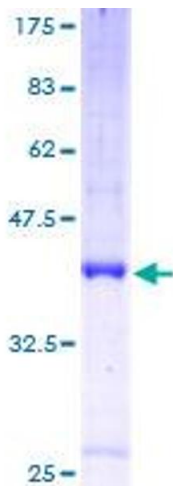


Image 1.