

Datasheet for ABIN1320188  
**SLC20A2 Protein (AA 1-652) (GST tag)**



[Go to Product page](#)

1 Image

Overview

Quantity:	2 µg
Target:	SLC20A2
Protein Characteristics:	AA 1-652
Origin:	Human
Source:	Wheat germ
Protein Type:	Recombinant
Purification tag / Conjugate:	This SLC20A2 protein is labelled with GST tag.
Application:	ELISA, Western Blotting (WB), Affinity Purification (AP), Antibody Array (AA)

Product Details

Purpose:	SLC20A2 (Human) Recombinant Protein (P01)
Sequence:	MAMDEYLWMV ILGFIIAFIL AFSVGANDVA NSFGTAVGSG VVTLRQACIL ASIFETTGSV LLGAKVGETI RKGIIDVNLY NETVETLMAG EVSAMVGS AV WQLIASFLRL PISGTHCIVG STIGFSLVAI GTKGVQWMEL VKIVASWFIS PLLSGFMSG L LFLVIRIFIL KKEDPVPNGL RALPVFYAAT IAINVFSIMY TGAPVLGLVL PMWAIALISF GVALLF AFFV WLFVCPWMRR KITGKLQKEG ALSRVSESL SKVQEAESPV FKELPGAKAN DDSTIPLTGA AGETLGTSEG TSAGSHPRAA YGRALSMTHG SVKSPISNGT FGFDPGTRSD GHVYHTVHKD SGLYKDLLHK IHIDRGPEEK PAQESNYRLL RRNNSYTCYT AAICGLPVHA TFRAADSSAP EDSEKLVGDT VSYSKKRLRY DSYSSYCN AV AEAIEAEEG GVEMKLASEL ADPDQPREDP AEEEEKEEKDA PEVHLLFHFL QVLTACFGSF AHGGNDVSNA IGPLVALWLI YKQGGVTQEA ATPVWLLFYG GVGICTGLWV WGRRVIQTMG KDLTPITPSS GFTIELASAF TVVIASNIGL PVSTTHCKVG SVVAVGWIRS RKAVDWRLFR NIFVAWFVTV PVAGLFSAAV MALLMYGILP YV

## Product Details

---

Characteristics:	Human SLC20A2 full-length ORF ( NP_006740.1, 1 a.a. - 652 a.a.) recombinant protein with GST-tag at N-terminal.
Purification:	in vitro wheat germ expression system

## Target Details

---

Target:	SLC20A2
Alternative Name:	SLC20A2 ( <a href="#">SLC20A2 Products</a> )
Background:	Full Gene Name: solute carrier family 20 (phosphate transporter), member 2 Synonyms: GLVR2,Glvr-2,MLVAR,PIT-2
Gene ID:	6575
NCBI Accession:	<a href="#">NM_006749</a>

## Application Details

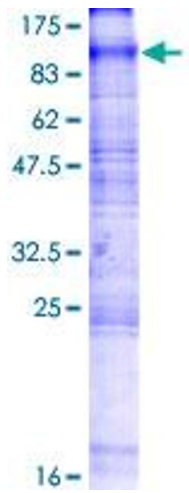
---

Application Notes:	Optimal working dilution should be determined by the investigator.
Comment:	Preparation method: in vitro, wheat germ expression system Product Quality tested by: 12.5% SDS-PAGE Stained with Coomassie Blue.
Restrictions:	For Research Use only

## Handling

---

Buffer:	50 mM Tris-HCl, 10 mM reduced Glutathione, pH =8.0 in the elution buffer.
Handling Advice:	Aliquot to avoid repeated freezing and thawing.
Storage:	-80 °C
Storage Comment:	Best use within three months from the date of receipt of this protein.



### SDS-PAGE

Image 1.