



[Go to Product page](#)

Datasheet for ABIN1320201
SLC22A18AS Protein (AA 1-150) (GST tag)

1 Image

Overview

Quantity:	10 µg
Target:	SLC22A18AS
Protein Characteristics:	AA 1-150
Origin:	Human
Source:	Wheat germ
Protein Type:	Recombinant
Purification tag / Conjugate:	This SLC22A18AS protein is labelled with GST tag.
Application:	ELISA, Western Blotting (WB), Affinity Purification (AP), Antibody Array (AA)

Product Details

Purpose:	SLC22A18AS (Human) Recombinant Protein (P01)
Sequence:	MRCAEGAWWF SPDGPAGSAA SIWPAEGAEG LPGQLGRDRL EVVYSVPDNDV PGQNGSRRPL VCKITGKCLS VCSEENAKAG GCSAFPLLLS QLGARMTGRE HAHKGPELTT PDSGLPRPPN PALAGFRALA QHSPPLGTST PSAVLLSAAT
Characteristics:	Human SLC22A18AS full-length ORF (AAH30237.1, 1 a.a. - 150 a.a.) recombinant protein with GST-tag at N-terminal.
Purification:	in vitro wheat germ expression system

Target Details

Target:	SLC22A18AS
Alternative Name:	SLC22A18AS (SLC22A18AS Products)

Target Details

Background:	Full Gene Name: solute carrier family 22 (organic cation transporter), member 18 antisense Synonyms: BWR1B,BWSCR1B,ORCTL2S,SLC22A1LS,p27-BWR1B
Gene ID:	5003

Application Details

Application Notes:	Optimal working dilution should be determined by the investigator.
Comment:	Preparation method: in vitro, wheat germ expression system Product Quality tested by: 12.5% SDS-PAGE Stained with Coomassie Blue.
Restrictions:	For Research Use only

Handling

Buffer:	50 mM Tris-HCl, 10 mM reduced Glutathione, pH =8.0 in the elution buffer.
Handling Advice:	Aliquot to avoid repeated freezing and thawing.
Storage:	-80 °C
Storage Comment:	Best use within three months from the date of receipt of this protein.

Images

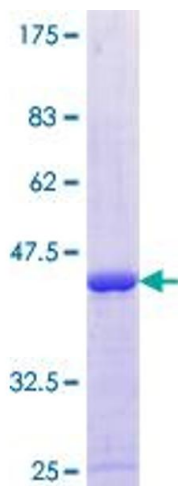


Image 1.