



[Go to Product page](#)

Datasheet for ABIN1320203

## SLC22A18AS Protein (AA 144-253) (GST tag)

### 1 Image

#### Overview

Quantity:	10 µg
Target:	SLC22A18AS
Protein Characteristics:	AA 144-253
Origin:	Human
Source:	Wheat germ
Protein Type:	Recombinant
Purification tag / Conjugate:	This SLC22A18AS protein is labelled with GST tag.
Application:	ELISA, Western Blotting (WB), Affinity Purification (AP), Antibody Array (AA)

#### Product Details

Purpose:	SLC22A1LS (Human) Recombinant Protein (Q01)
Sequence:	EVVYSVPDNV PGQNGSRRPL VCKITGKCLS VCSEENAKAG GCSAFPLLLS QLGARMTGRE HAHKGPELTT PDSGLPRPPN PALAGFRALA QHSPPLGTST PSAVLLSAAT
Characteristics:	Human SLC22A1LS partial ORF ( NP_009036, 144 a.a. - 253 a.a.) recombinant protein with GST-tag at N-terminal.
Purification:	in vitro wheat germ expression system

#### Target Details

Target:	SLC22A18AS
Alternative Name:	SLC22A18AS ( <a href="#">SLC22A18AS Products</a> )

## Target Details

Background:	Full Gene Name: solute carrier family 22 (organic cation transporter), member 18 antisense Synonyms: BWR1B,BWSCR1B,ORCTL2S,SLC22A1LS,p27-BWR1B
Gene ID:	5003
NCBI Accession:	<a href="#">NM_007105</a>

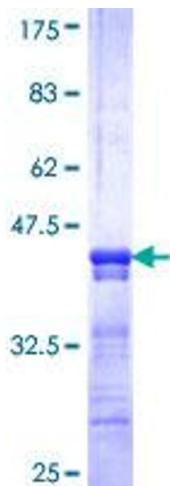
## Application Details

Application Notes:	Optimal working dilution should be determined by the investigator.
Comment:	Preparation method: in vitro, wheat germ expression system Product Quality tested by: 12.5% SDS-PAGE Stained with Coomassie Blue.
Restrictions:	For Research Use only

## Handling

Buffer:	50 mM Tris-HCl, 10 mM reduced Glutathione, pH =8.0 in the elution buffer.
Handling Advice:	Aliquot to avoid repeated freezing and thawing.
Storage:	-80 °C
Storage Comment:	Best use within three months from the date of receipt of this protein.

## Images



**Image 1.**