

Datasheet for ABIN1320257

SLC25A18 Protein (AA 124-184) (GST tag)



[Go to Product page](#)

1 Image

Overview

Quantity:	10 µg
Target:	SLC25A18
Protein Characteristics:	AA 124-184
Origin:	Human
Source:	Wheat germ
Protein Type:	Recombinant
Purification tag / Conjugate:	This SLC25A18 protein is labelled with GST tag.
Application:	ELISA, Western Blotting (WB), Affinity Purification (AP), Antibody Array (AA)

Product Details

Purpose:	SLC25A18 (Human) Recombinant Protein (Q01)
Sequence:	EMLKIQLQDA GRLAVHHQGS ASAPSTRSY TTGSASTHRR PSATLIAWEL LRTQGLAGLY R
Characteristics:	Human SLC25A18 partial ORF (NP_113669, 124 a.a. - 184 a.a.) recombinant protein with GST-tag at N-terminal.
Purification:	in vitro wheat germ expression system

Target Details

Target:	SLC25A18
Alternative Name:	SLC25A18 (SLC25A18 Products)
Background:	Gene: solute carrier family 25 (mitochondrial carrier), member 18

Target Details

Synonyms: GC2

Gene ID: 83733

NCBI Accession: [NM_031481](#)

Application Details

Application Notes: Optimal working dilution should be determined by the investigator.

Restrictions: For Research Use only

Handling

Buffer: 50 mM Tris-HCl, 10 mM reduced Glutathione, pH =8.0 in the elution buffer.

Handling Advice: Aliquot to avoid repeated freezing and thawing.

Storage: -80 °C

Storage Comment: Best use within three months from the date of receipt of this protein.

Images

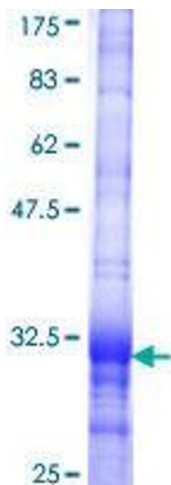


Image 1.