

Datasheet for ABIN1320270

SLC25A23 Protein (AA 2-74) (GST tag)[Go to Product page](#)**1** Image

Overview

Quantity:	10 µg
Target:	SLC25A23
Protein Characteristics:	AA 2-74
Origin:	Human
Source:	Wheat germ
Protein Type:	Recombinant
Purification tag / Conjugate:	This SLC25A23 protein is labelled with GST tag.
Application:	ELISA, Western Blotting (WB), Affinity Purification (AP), Antibody Array (AA)

Product Details

Purpose:	SLC25A23 (Human) Recombinant Protein (Q01)
Sequence:	RGSPGDAERR QRWGRLFEEL DSNKDGRVDV HELRQGLARL GGGNPDPGAQ QGISSEGDAD PDGGLDLEEF SRY
Characteristics:	Human SLC25A23 partial ORF (NP_077008.2, 2 a.a. - 74 a.a.) recombinant protein with GST-tag at N-terminal.
Purification:	in vitro wheat germ expression system

Target Details

Target:	SLC25A23
Alternative Name:	SLC25A23 (SLC25A23 Products)

Target Details

Background:	Full Gene Name: solute carrier family 25 (mitochondrial carrier, phosphate carrier), member 23 Synonyms: APC2,MCSC2,MGC2615,SCaMC-3
Gene ID:	79085
NCBI Accession:	NM_024103

Application Details

Application Notes:	Optimal working dilution should be determined by the investigator.
Comment:	Preparation method: in vitro, wheat germ expression system Product Quality tested by: 12.5% SDS-PAGE Stained with Coomassie Blue.
Restrictions:	For Research Use only

Handling

Buffer:	50 mM Tris-HCl, 10 mM reduced Glutathione, pH =8.0 in the elution buffer.
Handling Advice:	Aliquot to avoid repeated freezing and thawing.
Storage:	-80 °C
Storage Comment:	Best use within three months from the date of receipt of this protein.

Images

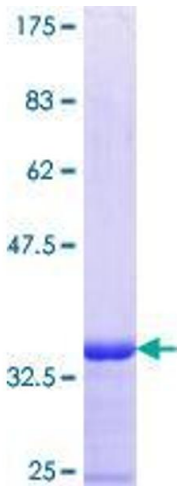


Image 1.