

Datasheet for ABIN1320329
SLC27A1 Protein (AA 44-137) (GST tag)



[Go to Product page](#)

1 Image

Overview

Quantity:	10 µg
Target:	SLC27A1 (FATP1)
Protein Characteristics:	AA 44-137
Origin:	Human
Source:	Wheat germ
Protein Type:	Recombinant
Purification tag / Conjugate:	This SLC27A1 protein is labelled with GST tag.
Application:	Western Blotting (WB), ELISA, Affinity Purification (AP), Antibody Array (AA)

Product Details

Purpose:	SLC27A1 (Human) Recombinant Protein (Q01)
Sequence:	LRIVCKTARR DLFGLSVLIR VRLELRRHQ R AGHTIPRIFQ AVVQRQPERL ALVDAGTGEC WTF AQLDAYS NAVANLFRQL GFAPGDVVAI FLEG
Characteristics:	Human SLC27A1 partial ORF (NP_940982.1, 44 a.a. - 137 a.a.) recombinant protein with GST-tag at N-terminal.
Purification:	in vitro wheat germ expression system

Target Details

Target:	SLC27A1 (FATP1)
Alternative Name:	SLC27A1 (FATP1 Products)

Target Details

Background:	Full Gene Name: solute carrier family 27 (fatty acid transporter), member 1 Synonyms: ACSVL5,FATP,FATP1,FLJ00336,MGC71751
Gene ID:	376497
NCBI Accession:	NM_198580
Pathways:	Inositol Metabolic Process , Regulation of Lipid Metabolism by PPARalpha

Application Details

Application Notes:	Optimal working dilution should be determined by the investigator.
Comment:	Preparation method: in vitro, wheat germ expression system Product Quality tested by: 12.5% SDS-PAGE Stained with Coomassie Blue.
Restrictions:	For Research Use only

Handling

Buffer:	50 mM Tris-HCl, 10 mM reduced Glutathione, pH =8.0 in the elution buffer.
Handling Advice:	Aliquot to avoid repeated freezing and thawing.
Storage:	-80 °C
Storage Comment:	Best use within three months from the date of receipt of this protein.

Images

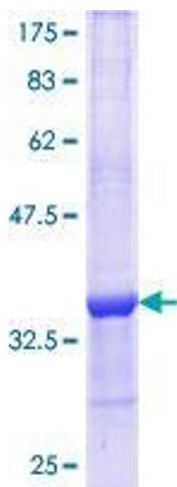


Image 1.