



Datasheet for ABIN1320359  
**GLUT4 Protein (AA 1-509) (GST tag)**



[Go to Product page](#)

1 Image

Overview

Quantity:	25 µg
Target:	GLUT4 (SLC2A4)
Protein Characteristics:	AA 1-509
Origin:	Human
Source:	Wheat germ
Protein Type:	Recombinant
Purification tag / Conjugate:	This GLUT4 protein is labelled with GST tag.
Application:	Western Blotting (WB), ELISA, Affinity Purification (AP), Antibody Array (AA)

Product Details

Purpose:	SLC2A4 (Human) Recombinant Protein (P01)
Sequence:	<p>MPSGFQQIGS EDGEPPQQRV TGTLVLAVFS AVLGSLQFGY NIGVINAPQK VIEQSYNETW  LGRQGPEGPS SIPPGLTTL WALSVAlFSV GGMISsFLIG IISQWLGRKR AMLVNNVLAV  LGGSLMGLAN AAASYEMLIL GRFLIGAYSG LTSGLVPMYV GEIAPTHLRG ALGTLNQLAI  VIGILIAQVL GLEsLLGTAS LWPLLLGLTV LPALLQLVLL PFCPEsPRYL YIIQNLEGPA  RKSLKRLTGW ADVSGVLAEL KDEKRKLERE RPLSLLQLLG SRTHRQPLII AVVLQLSQQL  SGINAVFYYS TSIFETAGVG QPAYATIGAG VVNTVFTLVS VLLVERAGRRL TLHLLGLAGM  CGCAILMTVA LLLLERVpAM SYVSIVAIFG FVAFFEIGPG PIPWFIVAEL FSQGPRPAAM  AVAGFSNWTS NFIIGMGFQY VAEAMGPYVF LLFAVLLLGF FIFTFLRVPE TRGRTFDQIS  AAFHRTPsLL EQEVKPsTEL EYLGPDEND</p>
Characteristics:	Human SLC2A4 full-length ORF ( NP_001033.1, 1 a.a. - 509 a.a.) recombinant protein with GST-tag at N-terminal.

## Product Details

---

Purification: in vitro wheat germ expression system

## Target Details

---

Target: GLUT4 (SLC2A4)

Alternative Name: SLC2A4 ([SLC2A4 Products](#))

Background: Full Gene Name: solute carrier family 2 (facilitated glucose transporter), member 4  
Synonyms: GLUT4

Gene ID: 6517

NCBI Accession: [NM\\_001042](#)

Pathways: [AMPK Signaling](#), [Carbohydrate Homeostasis](#), [Proton Transport](#), [Brown Fat Cell Differentiation](#),  
[Warburg Effect](#)

## Application Details

---

Application Notes: Optimal working dilution should be determined by the investigator.

Comment: Preparation method: in vitro, wheat germ expression system  
Product Quality tested by: 12.5% SDS-PAGE Stained with Coomassie Blue.

Restrictions: For Research Use only

## Handling

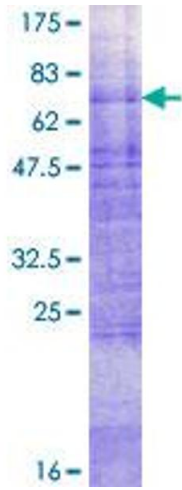
---

Buffer: 50 mM Tris-HCl, 10 mM reduced Glutathione, pH =8.0 in the elution buffer.

Handling Advice: Aliquot to avoid repeated freezing and thawing.

Storage: -80 °C

Storage Comment: Best use within three months from the date of receipt of this protein.



**Image 1.**