



[Go to Product page](#)

Datasheet for ABIN1320362

SLC2A4RG Protein (AA 178-269) (GST tag)

1 Image

Overview

Quantity:	10 µg
Target:	SLC2A4RG
Protein Characteristics:	AA 178-269
Origin:	Human
Source:	Wheat germ
Protein Type:	Recombinant
Purification tag / Conjugate:	This SLC2A4RG protein is labelled with GST tag.
Application:	ELISA, Western Blotting (WB), Affinity Purification (AP), Antibody Array (AA)

Product Details

Purpose:	SLC2A4RG (Human) Recombinant Protein (Q01)
Sequence:	EAAHFLFGEP TLRKRKSPAQ VMFQCLWKSC GKVLTASAM QRHIRLVHLG RQAEPEQSDG EEDFYYTELD VGVDTLTDGL SSLTPVSPTA SM
Characteristics:	Human SLC2A4RG partial ORF (NP_064446, 178 a.a. - 269 a.a.) recombinant protein with GST-tag at N-terminal.
Purification:	in vitro wheat germ expression system

Target Details

Target:	SLC2A4RG
Alternative Name:	SLC2A4RG (SLC2A4RG Products)

Target Details

Background:	Full Gene Name: SLC2A4 regulator Synonyms: GEF,HDBP1,Si-1-2,Si-1-2-19
Gene ID:	56731
NCBI Accession:	NM_020062
Pathways:	AMPK Signaling

Application Details

Application Notes:	Optimal working dilution should be determined by the investigator.
Comment:	Preparation method: in vitro, wheat germ expression system Product Quality tested by: 12.5% SDS-PAGE Stained with Coomassie Blue.
Restrictions:	For Research Use only

Handling

Buffer:	50 mM Tris-HCl, 10 mM reduced Glutathione, pH =8.0 in the elution buffer.
Handling Advice:	Aliquot to avoid repeated freezing and thawing.
Storage:	-80 °C
Storage Comment:	Best use within three months from the date of receipt of this protein.

Images

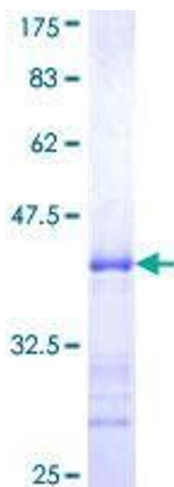


Image 1.