

Datasheet for ABIN1320366

SLC2A9 Protein (AA 224-287) (GST tag)



[Go to Product page](#)

1 Image

Overview

Quantity:	10 µg
Target:	SLC2A9
Protein Characteristics:	AA 224-287
Origin:	Human
Source:	Wheat germ
Protein Type:	Recombinant
Purification tag / Conjugate:	This SLC2A9 protein is labelled with GST tag.
Application:	Western Blotting (WB), ELISA, Affinity Purification (AP), Antibody Array (AA)

Product Details

Purpose:	SLC2A9 (Human) Recombinant Protein (Q01)
Sequence:	PDSPRYLLLE KHNEARAVKA FQTFLGKADV SQEVEEVLAE SRVQRSIRLV SVLELLRAPY VRWQ
Characteristics:	Human SLC2A9 partial ORF (NP_001001290, 224 a.a. - 287 a.a.) recombinant protein with GST-tag at N-terminal.
Purification:	in vitro wheat germ expression system

Target Details

Target:	SLC2A9
Alternative Name:	SLC2A9 (SLC2A9 Products)
Background:	Full Gene Name: solute carrier family 2 (facilitated glucose transporter), member 9

Target Details

Synonyms: GLUT9, GLUTX, UAQTL2, URATv1

Gene ID: 56606

NCBI Accession: [NM_001001290](#)

Application Details

Application Notes: Optimal working dilution should be determined by the investigator.

Comment: Preparation method: in vitro, wheat germ expression system
Product Quality tested by: 12.5% SDS-PAGE Stained with Coomassie Blue.

Restrictions: For Research Use only

Handling

Buffer: 50 mM Tris-HCl, 10 mM reduced Glutathione, pH =8.0 in the elution buffer.

Handling Advice: Aliquot to avoid repeated freezing and thawing.

Storage: -80 °C

Storage Comment: Best use within three months from the date of receipt of this protein.

Images

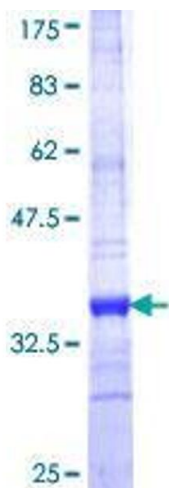


Image 1.