



[Go to Product page](#)

Datasheet for ABIN1320374

SLC30A9 Protein (AA 1-568) (GST tag)

1 Image

Overview

Quantity:	10 µg
Target:	SLC30A9
Protein Characteristics:	AA 1-568
Origin:	Human
Source:	Wheat germ
Protein Type:	Recombinant
Purification tag / Conjugate:	This SLC30A9 protein is labelled with GST tag.
Application:	ELISA, Western Blotting (WB), Affinity Purification (AP), Antibody Array (AA)

Product Details

Purpose:	SLC30A9 (Human) Recombinant Protein (P01)
Sequence:	MLPGLAAAAA HRCSWSSLCR LRLRCRAAAC NPSDRQEWQN LVTFGSFSNV VPCSHPYIGT LSQVKLYSTN VQKEGQGSQT LRVEKVPSFE TAEGIGAELK APLKQEPLQV RVKAVLKKRE YGSKYTQNNF ITGVRAINEF CLKSSDLEQL RKIRRRSPHE DTESFTVYLR SDVEAKSLEV WGSPEALARE KKLKRAEIE YRERLFRNQK ILREYRDFLG NTKPRSRSTAS VFFKGPGKVV MVAICINGLN CFFKFLAWIY TGSASMFSEA IHSLSDTCNQ GLLALGISKS VQTPDPSHPY GFSNMRYISS LISGVGIFMM GAGLSWYHGV MGLLHPQPIE SLLWAYCILA GSLVSEGATL LVAVNELRRN ARAKGMSFYK YVMESRDPST NVILLED TAA VLGVIIAATC MGLTSITGNP LYDSLGLSLGV GTLLGMVSAF LIYTNTEALL GRSIQPEQVQ RLTELLENDP SVRAIHDVKA TDLGLGKVRV KAEVDFDGRV VTRSYLEKQD FDQMLQEIQE VKTPEELET F MLKHGENIID TLGAEVDRL E KELKRNPEV RHYDLEIL
Characteristics:	Human SLC30A9 full-length ORF (AAH07732.1, 1 a.a. - 568 a.a.) recombinant protein with GST-

Product Details

tag at N-terminal.

Purification: in vitro wheat germ expression system

Target Details

Target: SLC30A9

Alternative Name: SLC30A9 ([SLC30A9 Products](#))

Background: Gene: solute carrier family 30 (zinc transporter), member 9
Synonyms: C4orf1, GAC63, HUEL, ZNT9

Gene ID: 10463

Pathways: [SARS-CoV-2 Protein Interactome](#)

Application Details

Application Notes: Optimal working dilution should be determined by the investigator.

Restrictions: For Research Use only

Handling

Buffer: 50 mM Tris-HCl, 10 mM reduced Glutathione, pH =8.0 in the elution buffer.

Handling Advice: Aliquot to avoid repeated freezing and thawing.

Storage: -80 °C

Storage Comment: Best use within three months from the date of receipt of this protein.

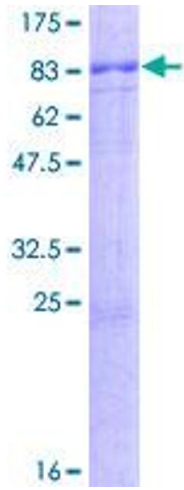


Image 1.