



[Go to Product page](#)

Datasheet for ABIN1320398

SLC35E2 Protein (AA 1-266) (GST tag)

1 Image

Overview

Quantity:	10 µg
Target:	SLC35E2
Protein Characteristics:	AA 1-266
Origin:	Human
Source:	Wheat germ
Protein Type:	Recombinant
Purification tag / Conjugate:	This SLC35E2 protein is labelled with GST tag.
Application:	ELISA, Western Blotting (WB), Affinity Purification (AP), Antibody Array (AA)

Product Details

Purpose:	SLC35E2 (Human) Recombinant Protein (P01)
Sequence:	MSSSVKTPAL EELVPGSEEK PKGRSPLSWG SLFGHRSEKI VFAKSDGGTD ENVLTVTITE TTVIESDLGV WSSRALLYLT LWFFFSFCTL FLNKYILSL GGEPSMLGAV QMLSTTVIGC VKTLVPCCLY QHKARLSYPP NFLMTMLFVG LMRFATVVLG LVSLKNVAVS FAETVKSSAP IFTVIMSRMI LGEYTG RPSD REEREELQLQ PGRGAAASDR RSPVPPSERH GVRPHGENLP GDFQVPQALH RVALSMALPC PMLPAS
Characteristics:	Human SLC35E2 full-length ORF (NP_878258.1, 1 a.a. - 266 a.a.) recombinant protein with GST-tag at N-terminal.
Purification:	in vitro wheat germ expression system

Target Details

Target:	SLC35E2
Alternative Name:	SLC35E2 (SLC35E2 Products)
Background:	Full Gene Name: solute carrier family 35, member E2 Synonyms: DKFZp686M0869,FLJ34996,FLJ44537,KIAA0447,MGC104754,MGC117254,MGC126715,MGC138494
Gene ID:	9906
NCBI Accession:	NM_182838

Application Details

Application Notes:	Optimal working dilution should be determined by the investigator.
Comment:	Preparation method: in vitro, wheat germ expression system Product Quality tested by: 12.5% SDS-PAGE Stained with Coomassie Blue.
Restrictions:	For Research Use only

Handling

Buffer:	50 mM Tris-HCl, 10 mM reduced Glutathione, pH =8.0 in the elution buffer.
Handling Advice:	Aliquot to avoid repeated freezing and thawing.
Storage:	-80 °C
Storage Comment:	Best use within three months from the date of receipt of this protein.

Images

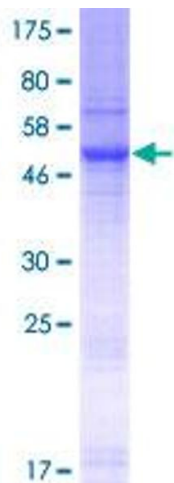


Image 1.