



[Go to Product page](#)

Datasheet for ABIN1320407

SLC36A2 Protein (AA 1-71) (GST tag)

1 Image

Overview

Quantity:	10 µg
Target:	SLC36A2
Protein Characteristics:	AA 1-71
Origin:	Human
Source:	Wheat germ
Protein Type:	Recombinant
Purification tag / Conjugate:	This SLC36A2 protein is labelled with GST tag.
Application:	ELISA, Western Blotting (WB), Affinity Purification (AP), Antibody Array (AA)

Product Details

Purpose:	SLC36A2 (Human) Recombinant Protein (Q01)
Sequence:	MSVTKSTEGP QGAVAIKLDL MSPPEAKKL ENKDSTFLDE SPSESAGLKK TKGITVFQAL IHLVKGNMGT G
Characteristics:	Human SLC36A2 partial ORF (NP_861441, 1 a.a. - 71 a.a.) recombinant protein with GST-tag at N-terminal.
Purification:	in vitro wheat germ expression system

Target Details

Target:	SLC36A2
Alternative Name:	SLC36A2 (SLC36A2 Products)

Target Details

Background:	Full Gene Name: solute carrier family 36 (proton/amino acid symporter), member 2 Synonyms: FLJ16051,MGC119658,MGC119660,PAT2,TRAMD1
Gene ID:	153201
NCBI Accession:	NM_181776
Pathways:	Proton Transport

Application Details

Application Notes:	Optimal working dilution should be determined by the investigator.
Comment:	Preparation method: in vitro, wheat germ expression system Product Quality tested by: 12.5% SDS-PAGE Stained with Coomassie Blue.
Restrictions:	For Research Use only

Handling

Buffer:	50 mM Tris-HCl, 10 mM reduced Glutathione, pH =8.0 in the elution buffer.
Handling Advice:	Aliquot to avoid repeated freezing and thawing.
Storage:	-80 °C
Storage Comment:	Best use within three months from the date of receipt of this protein.

Images

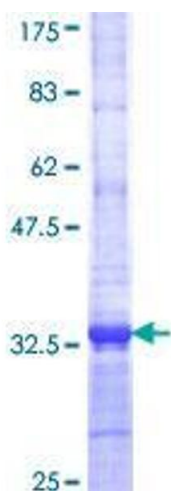


Image 1.