



[Go to Product page](#)

Datasheet for ABIN1320409

## SLC37A3 Protein (AA 1-494) (GST tag)

### 1 Image

#### Overview

Quantity:	10 µg
Target:	SLC37A3
Protein Characteristics:	AA 1-494
Origin:	Human
Source:	Wheat germ
Protein Type:	Recombinant
Purification tag / Conjugate:	This SLC37A3 protein is labelled with GST tag.
Application:	ELISA, Western Blotting (WB), Affinity Purification (AP), Antibody Array (AA)

#### Product Details

Purpose:	SLC37A3 (Human) Recombinant Protein (P01)
Sequence:	<p>MAWPNVFQRG SLLSQFSHHH VVFLLTFFS YLLHASRKT FSNVKVSISE QWTPSAFNNTS</p> <p>VELPVEIWSS NHLFPSAEKA TLFLGTLDTI FLFSYAVGLF ISGIVGDRLN LRWVLSFGMC</p> <p>SSALVVFVFG ALTEWLRFYK KWLKCLWIV NGLLQSTGWP CVVAVMGNWF GKAGRGVVFG</p> <p>LWSACASVGN ILGACCLASSV LQYGYEYAFK VTASVQFAGG IVIFFGLLVS PEEIGLSGIE</p> <p>AEENFEEDSH RPLINGGENE DEYEPNYSIQ DDSSVAQVKA ISFYQACCLP GVIPYSLAYA</p> <p>CLKLVNYSFF FWLPHYLSNN FGWKEAEADK LSIWYDVGGI IGGTLQGFIS DVLQKRAPVL</p> <p>ALSLLLAVGS LIGYSRSPND KSNALLMTV TGFFIGGPSN MISSAISADL GRQELIQRSS</p> <p>EALATVTGIV DSGSGIGAAV GQYLVSILRD KLGWMWVFYF FILMTSCTIV FISPLIVREI</p> <p>FSLVLRQAH ILRE</p>
Characteristics:	Human SLC37A3 full-length ORF ( NP_996996.1, 1 a.a. - 494 a.a.) recombinant protein with GST-tag at N-terminal.

## Product Details

---

Purification: in vitro wheat germ expression system

## Target Details

---

Target: SLC37A3

Alternative Name: SLC37A3 ([SLC37A3 Products](#))

Background: Full Gene Name: solute carrier family 37 (glycerol-3-phosphate transporter), member 3  
Synonyms: MGC32939

Gene ID: 84255

NCBI Accession: [NM\\_207113](#)

## Application Details

---

Application Notes: Optimal working dilution should be determined by the investigator.

Comment: Preparation method: in vitro, wheat germ expression system  
Product Quality tested by: 12.5% SDS-PAGE Stained with Coomassie Blue.

Restrictions: For Research Use only

## Handling

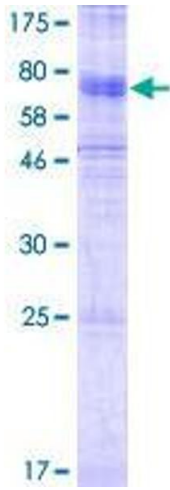
---

Buffer: 50 mM Tris-HCl, 10 mM reduced Glutathione, pH =8.0 in the elution buffer.

Handling Advice: Aliquot to avoid repeated freezing and thawing.

Storage: -80 °C

Storage Comment: Best use within three months from the date of receipt of this protein.



**Image 1.**