



Datasheet for ABIN1320426  
**SLC39A11 Protein (AA 1-335) (GST tag)**



[Go to Product page](#)

1 Image

Overview

Quantity:	10 µg
Target:	SLC39A11
Protein Characteristics:	AA 1-335
Origin:	Human
Source:	Wheat germ
Protein Type:	Recombinant
Purification tag / Conjugate:	This SLC39A11 protein is labelled with GST tag.
Application:	ELISA, Western Blotting (WB), Affinity Purification (AP), Antibody Array (AA)

Product Details

Purpose:	SLC39A11 (Human) Recombinant Protein (P01)
Sequence:	MLQGHSSVFQ ALLGTFFTWG MTAAGAALVF VFSSGQRRIL DGSLGFAAGV MLAASYWSSL APAVEMATSS GGFGAFAFFP VAVGFTLGAA FVYLADLLMP HLGAAEDPQT ALALNFGSTL MKKKSDPEGP ALLFPESELS IRIDKSENGE AYQRKKAAT GLPEGPAVPV PSRGNLAQPG GSSWRRIAL ILAITIHNVP EGLAVGVGFG AIEKTASATF ESARNLAIGI GIQNFPEGLA VSLPLRGAGF STWRAFYGQ LSGMVEPLAG VFGAFVLA EPILPYALAF AAGAMVYVVM DDIPEAQIS GNGKLASWAS ILGFVVMMSL DVGLG
Characteristics:	Human SLC39A11 full-length ORF ( NP_631916.1, 1 a.a. - 335 a.a.) recombinant protein with GST-tag at N-terminal.
Purification:	in vitro wheat germ expression system

## Target Details

Target:	SLC39A11
Alternative Name:	SLC39A11 ( <a href="#">SLC39A11 Products</a> )
Background:	Full Gene Name: solute carrier family 39 (metal ion transporter), member 11 Synonyms: C17orf26
Gene ID:	201266
NCBI Accession:	<a href="#">NM_139177</a>

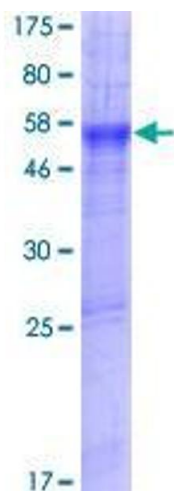
## Application Details

Application Notes:	Optimal working dilution should be determined by the investigator.
Comment:	Preparation method: in vitro, wheat germ expression system Product Quality tested by: 12.5% SDS-PAGE Stained with Coomassie Blue.
Restrictions:	For Research Use only

## Handling

Buffer:	50 mM Tris-HCl, 10 mM reduced Glutathione, pH =8.0 in the elution buffer.
Handling Advice:	Aliquot to avoid repeated freezing and thawing.
Storage:	-80 °C
Storage Comment:	Best use within three months from the date of receipt of this protein.

## Images



**Image 1.**