



[Go to Product page](#)

Datasheet for ABIN1320451

SLC43A1 Protein (AA 1-559) (GST tag)

1 Image

Overview

Quantity:	10 µg
Target:	SLC43A1
Protein Characteristics:	AA 1-559
Origin:	Human
Source:	Wheat germ
Protein Type:	Recombinant
Purification tag / Conjugate:	This SLC43A1 protein is labelled with GST tag.
Application:	ELISA, Western Blotting (WB), Affinity Purification (AP), Antibody Array (AA)

Product Details

Purpose:	SLC43A1 (Human) Recombinant Protein (P01)
Sequence:	<p>MAPTLQQAYR RRWWMACTAV LENLFFSAVL LGWGSLIIL KNEGFYSSTC PAESSTNTTQ DEQRRWPGCD QQDEMLNLGF TIGSFVLSAT TLPLGILMDR FGPRPVRLVG SACFTASCTL MALASRDVEA LSPLIFLALS LNGFGGICLT FTSLTLPNMF GNLRSTLMAL MIGSYASSAI TFPGIKLIYD AGVAFVIMF TWSGLACLIF LNCTLNWPIE AFPAPEEVNY TTKIKLSGLA LDHKVTGDLF YTHVTTMGQR LSQKAPSLED GSDAFMSPQD VRGTSENLEPE RSVPLRKSCLC SPTFLWSLLT MGMTQLRIIF YMAAVNKMLE YLVTGGQEHE TNEQQQKVAE TVGFYSSVFG AMQLLCLLTC PLIGYIMDWR IKDCVDAPTQ GTVLGDARDG VATKSIRPRY CKIQKLTNAI SAFTLTNLLL VGFGITCLIN NLHLQFVTFV LHTIVRGFFH SACGSLYAAV FPSNHFGTLT GLQSLISAVF ALLQQPLFMA MVGPKGEPF WVNGLLLLFS LLGFLPSYL FYYRARLQQE YAANGMGPLK VLSGSEVTA</p>
Characteristics:	Human SLC43A1 full-length ORF (NP_003618.1, 1 a.a. - 559 a.a.) recombinant protein with

Product Details

GST-tag at N-terminal.

Purification: in vitro wheat germ expression system

Target Details

Target: SLC43A1

Alternative Name: SLC43A1 ([SLC43A1 Products](#))

Background: Full Gene Name: solute carrier family 43, member 1
Synonyms: LAT3,PB39,POV1,R00504

Gene ID: 8501

NCBI Accession: [NM_003627](#)

Application Details

Application Notes: Optimal working dilution should be determined by the investigator.

Comment: Preparation method: in vitro, wheat germ expression system
Product Quality tested by: 12.5% SDS-PAGE Stained with Coomassie Blue.

Restrictions: For Research Use only

Handling

Buffer: 50 mM Tris-HCl, 10 mM reduced Glutathione, pH =8.0 in the elution buffer.

Handling Advice: Aliquot to avoid repeated freezing and thawing.

Storage: -80 °C

Storage Comment: Best use within three months from the date of receipt of this protein.

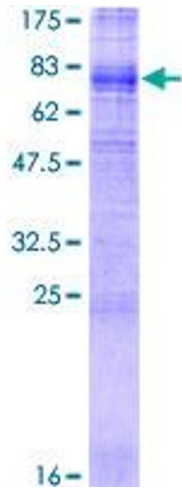


Image 1.